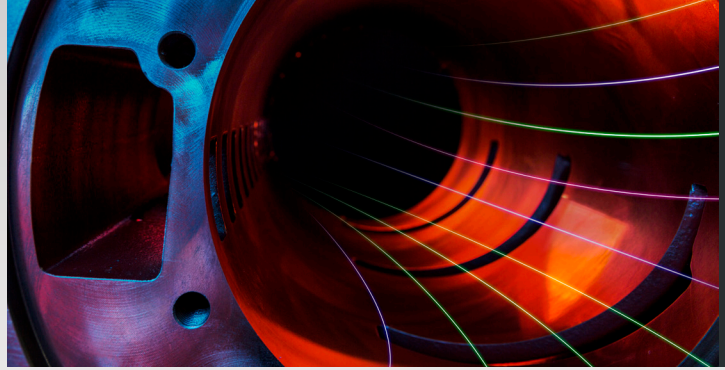
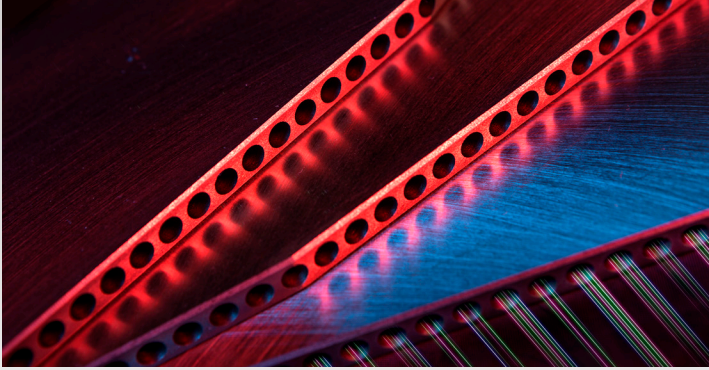




5 HP - 7.5 HP - 10 HP - 15 HP - 20 HP - 25 HP - 30 HP

FIXED-SPEED DIRECT DRIVE ROTARY VANE AIR COMPRESSORS



The **MATTEI® Eco-friendly Rotary Vane Classic Series (ERC)** 4 through 22 models of advanced volumetric air compressors are engineered to deliver rugged reliability in an energy efficient design with uncommonly extended maintenance intervals. We invite you to experience these long lasting, energy efficient, single-stage, 5÷30 HP, fixed-speed, direct-drive air compressors in a performance-built package that has been proven in harsh dirty environments. These compressors leverage the legendary durability of Mattei's proprietary "bearingless" **Rotary Vane Technology** in delivering a truly unique, simple, rugged, and reliable energy saving solution that delivers unrivalled performance and longevity to air compressor applications around the world.

WHEN RUGGED RELIABILITY IS TANTAMOUNT

Lowest Lifecycle Costs

Longest Maintenance Intervals

Quiet Easy Access Open-Frame Design



THINK GREEN

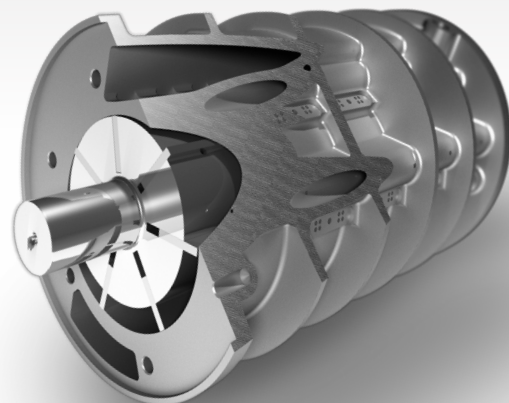
TIMELESS "BEARING-LESS" AIREND

Mattei's Vane Technology is "Simply Different."

Whereas a rotary screw compressor relies on a pair of precision mated helically cut rotors supported by anywhere from 6 to 9 ball or roller bearings to manage the axial and thrust forces, a Mattei vane compressor is comprised of a single rotor supported by 2 white metal bushes to manage the axial forces – there are NO thrust forces in a vane compressor.

Thrust forces are what cause bearing tolerances to wear until the airend needs to be rebuilt. This wear condition requires that you replace the bearings if caught early

enough or, you must replace the entire airend when other critical components are damaged due to extreme bearing wear prior to attempting service. This deterioration of performance simply does not, and cannot, occur in a rotary vane compressor. In fact, vane performance gets better with time.



GET YOUR VANE GAIN

Only Mattei's rotary vane technology is proven to be even more energy efficient the longer it runs.

We call it **VANE GAIN**. Third party testing confirms that our lifetime-rated cast-iron blades begin to season from the moment you turn it on.

What does that mean to you? Simple. Our VANE lets you GAIN lower energy costs over time - an exclusive benefit found ONLY in Mattei's proprietary rotary vane technology.

THE LONGEST LASTING FILTERS IN THE INDUSTRY

Classic ERC Series compressors incorporate unique long-lasting filters that are designed to minimize maintenance requirements while withstanding harsh environments.

- **Air intake filter:** massive with a surface area multiple times larger than is typical
 - Offers a heavy-duty option with remote intake for severe applications
- **Oil filter:** rated for 5,000 hours of operation – more than 2X the hours of conventional spin-on filters.
- **Air/Oil Separator filter:** rated for 10,000 hours of operation – up to 4X a typical air/oil separator

THE MOST LEAK FREE DESIGN IN THE INDUSTRY

When people see one of these, they have no idea it is an air compressor. Sleek construction. No hoses. Only two galvanized steel oil lines and the oil return line. Everything else is internally ported through the rugged cast iron housing. The Classic ERC Series compressors are designed to be leak free in the nastiest applications in the world.

THE MOST RUGGED AND DURABLE COMPRESSOR KNOWN TO MAN

This is the exact same unitized compressor envelope that we deploy worldwide for use on freight trains, buses, people movers and earthmoving equipment. It was engineered to deliver years of rugged dependable operation in the most demanding applications around the globe.



ERC 4 - 5 - 7 - 11 - 15 - 18 - 22



1. MAESTRO XB CONTROLLER

- a. The “brains” that directs, manages, and monitors all aspects of system logic.
- b. Automatic Restart in event of power failure, programmable Start/Stop timers, Lead/Lag/ Alternation control (up to 4 compressors), Maintenance Reminders, Phase Reversal Protection– all standard



2. INTEGRATED AIREND

Legendary encapsulated compression module incorporates compressor, oil filter, hydraulic servo-controlled inlet valve, built-in oil reservoir, and thermostatic bulb in a compact leak-free design.



3. LONG LIFE OIL FILTER & AIR/OIL SEPARATOR

Oil filter rated for 5,000 hours and, 10,000 hour rated air/oil separator, offer you the longest filter maintenance intervals in the industry and, limit oil carryover to 1-3 ppm



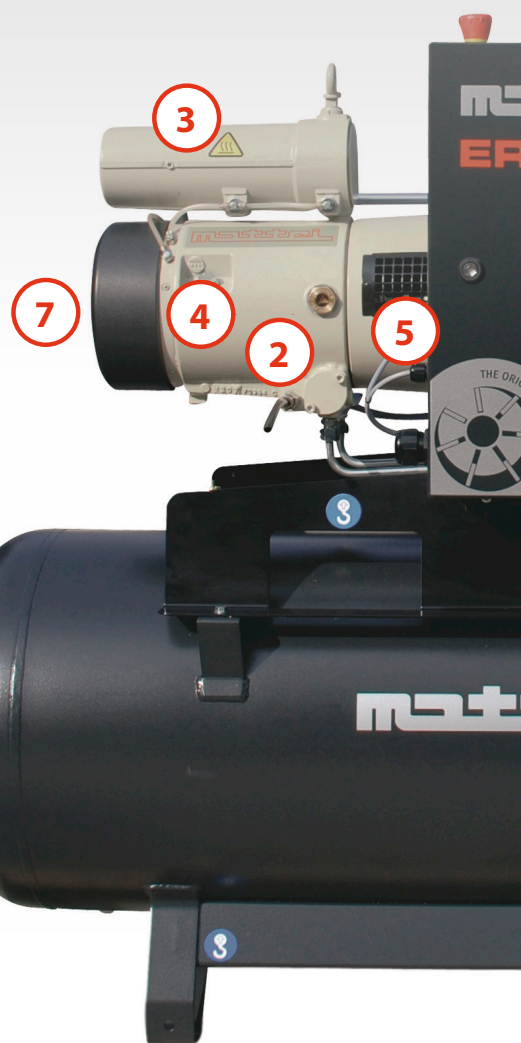
4. ROTOR STATOR UNIT (RSU)

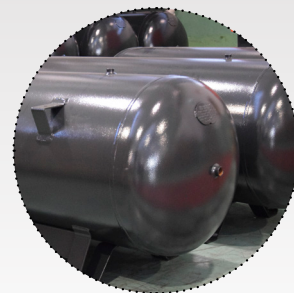
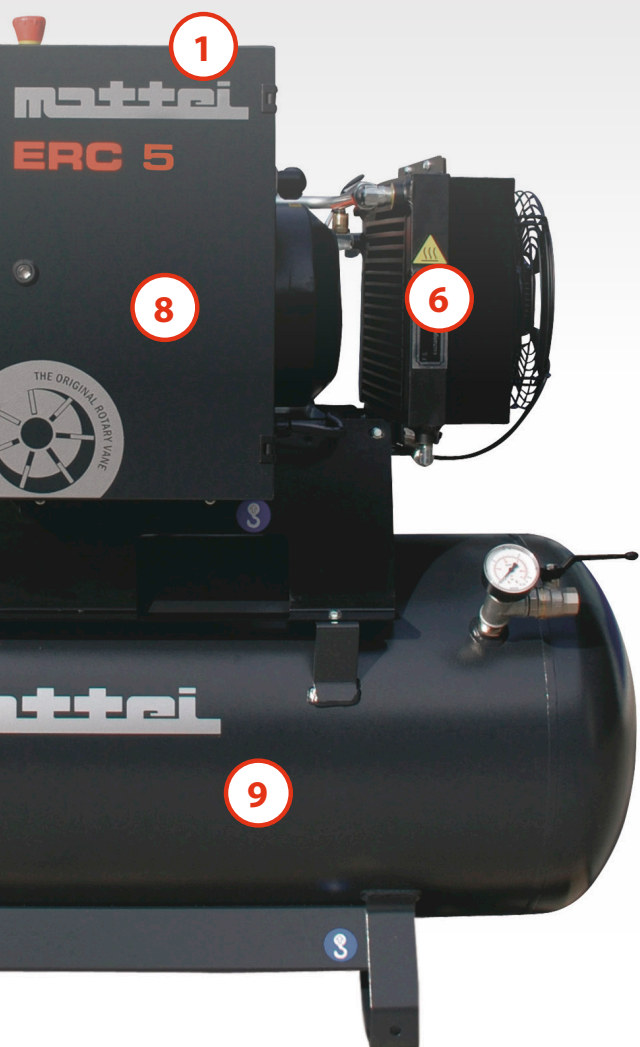
Proprietary “bearing-less compressor” features zero wear vanes, zero wear bushes, zero thrust forces. You benefit with >100,000 hours of operation, never require an expensive airend overhaul and, gain the longest airend life and the lowest lifecycle costs in the industry. It’s why we say, “No Vane. No Gain.”



5. DIRECT-DRIVE COUPLING

Easy-access flexible coupling ensures perfect shaft alignment, low-noise, long life, and eliminates power robbing gear or belt losses and their associated high maintenance costs.





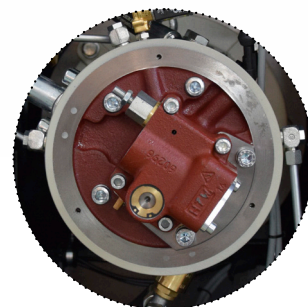
9. OPTIONAL AIR RECEIVER

80- or 120-gallon storage tank give you more air and helps lower your energy costs



8. WYE-DELTA STARTER

Rugged and reliable wye-delta starting reduces inrush current and the shock of full voltage starters



7. HYDRAULICALLY CONTROLLED AIR INLET VALVE

Pneumatic intake valves collect moisture and require constant maintenance. Our hydraulic air intake valve, off-load valve and vacuum relief valves are integrated into one cast iron block behind the air intake filter engineered to avoid this problem and enable fast simple maintenance.



6. OVERSIZED COOLERS

Rated 45°C/113°F ambient. Engineered for quiet dependable service in hostile environments. Fixed-speed radial fan with dependable motor draws ambient air through rear-panel mounted oversized combination oil and air coolers.

ERC 4 - 5 - 7 - 11 - 15 - 18 - 22

TECHNICAL DATA

Model	Power	Power	145 psig H	145psig H	Energy	Air Receiver	Sound pressure level	Length	Width	Height	Weight	Air Outlet
	hp	kW	acfm	m ³ /min	voltage	gallons	dB(A)	inch	inch	inch	lbs	npt
ERC 4 HX	5	4	22,0	0.62	208.230/ 460/ 3ph/60hz	-	71	45	30	24	440	1/2"
ERC 5 HX	7.5	5	26.1	0.74		-	71	45	30	24	440	1/2"
ERC 7 HX	10	7	40.2	1.14		-	75	56	27	29	605	3/4"
ERC 11 HX	15	11	54.7	1.55		-	77	56	27	29	605	3/4"
ERC 15 HX	20	15	85.8	2.43		-	81	64	64	28	792	1"
ERC 18 HX	25	18	92.2	2.61		-	81	64	64	28	880	1"
ERC 22 HX	30	22	110.5	3.13		-	81	64	64	28	880	1"
ERCS 4 HXS80	5	4	22,0	0.62	208.230/ 460/ 3ph/60hz	80	71	65	28	50	653.4	1"
ERCS 5 HXS80	7.5	5	26.1	0.74		80	71	65	28	50	653.4	1"
ERCS 7 HXS80	10	7	40.2	1.14		80	75	65	30	50	818.4	1"
ERCS 11 HXS80	15	11	54.7	1.55		80	77	65	30	50	818	1"
ERCS 4 HXS120	5	4	22,0	0.62	208.230/ 460/ 3ph/60hz	120	71	69	28	56	756.8	1"
ERCS 5 HXS120	7.5	5	26.1	0.74		120	71	69	28	56	756.8	1"
ERCS 7 HXS120	10	7	40.2	1.14		120	75	69	30	55	921.8	1"
ERCS 11 HXS120	15	11	54.7	1.55		120	77	69	30	55	921.8	1"

F.A.D. in accordance with ISO 1217, annex "C" | Sound pressure level according to ISO 2151, tolerance ± 3dB(A)
Working pressure: 138 psig for 145 psig version,

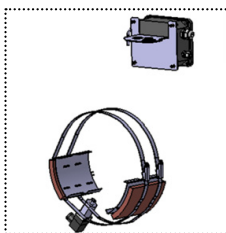
OPTIONS

HEAT RECOVERY KIT



The **Heat recovery kit** is totally integrated into the oil cooling circuit, making the unit independent from the oil temperature control and protected from any possible malfunctions, such as waterflow reduction and overheating.

HEATERS KIT



The **heaters** enables the use of the compressor (equipped without soundproofing canopy) in a cold environment (+14°F) using the standard lubricant.

V-LIFE FOOD LUBRICANT



Mattei V-LIFE FOOD is a synthetic, non-toxic lubricant, approved and graded by the USDA as H1 classification, **suitable for the food-processing industry and applications with a low environmental impact.**

MAESTRO XB EXPANSION MODULE*



Maestro XB expansion module is also referred to as a clock card. It allows you to program the compressor to automatically start and stop based on your specific days and hours of operation.

HIGH EFFICIENCY INTAKE FILTER KIT



The **high efficiency intake filter** is able to hold solid particles of more or equal to 3 micron with a filtering efficiency of 99%.

CONDENSATE DRAIN AND SEPARATOR



Installed after the aftercooler, it removes 65% of all condensable condensate. Includes automatic zero loss drain with dry contacts.

* Clock function for time programming



Get MyCare 6 & 10 Extended Warranty Coverage

Standard warranty is one (1) year, bumper-to-bumper covering parts and labor against defects in materials and workmanship.

In addition, your ERC 4-22 direct-drive air compressor is eligible for our MyCare 6 & 10 extended warranty program at NO additional cost to you.



WHAT YOU GAIN WITH MYCARE 6 & 10

The MyCare 6 program doubles the bumper-to-bumper protection to two (2) years and, covers the major compenets: Motor, Coolers, Controller, Oil Separator Tank, Inverter and Rotor Stator Unit (RSU or Airend), for a total of six (6) years. The MyCare 10 component is offered for our direct-drive industrial compressors and covers the Rotor Stator Unit (RSU or Airend) for an additional three (3) years, years seven (7) through ten (10).

HOW YOU GET MYCARE 6 & 10

To choose your **MyCare 6 & 10** extended warranty plan, simply check the MyCare 6 & 10 box during the start-up and commissioning process for your new Mattei air compressor as performed by a local Authorized Mattei Distributor.

MYCARE 6 & 10: TAILORED TO YOUR NEEDS

The program is built around your specific environment and anticipated hours of operation.

Authorized Mattei Distributors, are factory trained to ensure you get fast courteous service. They know what to look for to ensure you place your compressor in the best possible environment to ensure years of great service from your Mattei. The Technicians that inspect, start-up and commission your Mattei are experienced in recommending the proper service program based on your specific environment. They want to get the job done quickly and correctly and will only recommend service intervals that they know will keep you happy and up and running between scheduled visits.

YOUR GOAL IS OUR GOAL

Our mutual goal is to ensure that your investment is properly maintained. This allows us to guarantee you will get the longest service life out of it while enjoying the lowest operating costs for years to come.

Mattei, simply wants you to benefit from the peace-of-mind in knowing that Mattei and your local Distributor have your best interests at heart right from the start.

GENUINE ORIGINAL PARTS & LUBRICANTS

Mattei compressors are engineered for many years of service. Our lubricants are engineered and custom blended to ensure that those lifetime-rated blades ride on a thin film of lubricant to prevent any wear and tear to the compressor. Authorized Mattei Service Centers employ qualified service engineers that carry specific tooling and stock Genuine Mattei Parts and Lubricants made to very high design standards that conform to exact technical specifications. Only through the use of Genuine Mattei Parts and Lubricants can you be guaranteed the protection you deserve and the highest levels of performance, reliability, safety and the lower energy costs of the future that were originally engineered into your Mattei air compressor.





ITALY - ING. ENEA MATTEI SpA

Strada Padana Superiore, 307
20055 VIMODRONE (MI)
Tel + 39 02253051 - Fax +39 0225305243
E-mail: info@matteigroup.com

USA - MATTEI COMPRESSORS Inc

9635 Liberty Road, suite E
Randallstown, MD 21133
Phone +1 410 5217020
E-mail: mus.info@matteigroup.com



<http://www.matteigroup.com/en-us/>

UNI EN ISO 9001:2015

FRANCE

MATTEI COMPRESSEURS
Phone +33 5 35 54 22 05 - Fax +33 9 72 31 68 33
E-MAIL: info@matteigroup.com - www.mattei.fr

GERMANY

MATTEI KOMPRESSOREN DEUTSCHLAND GmbH
Phone +49 07191 - 933801
E-MAIL: mde.info@matteigroup.com

GREAT BRITAIN

MATTEI COMPRESSORS Ltd
Phone +44 (0)1789 450577 - Fax +44 (0)1789 450698
E-MAIL: muk.info@matteigroup.com - www.mattei.co.uk

PEOPLE'S REPUBLIC OF CHINA

Mattei (SuZhou) Air Compressors Manufacturing Co., Ltd
WFOE by Ing. Enea Mattei SpA - Italy
Tel: +86 512 66679986 Fax: +86 512 66679989
E-MAIL: sales.china@matteigroup.com - www.matteisuzhou.cn