

ENGINEERING DATA

OILFREE SCROLL COMPRESSOR

LB5L

5HP, 0.8MPa(8bar)

REV.NO	DATE	WRITTEN BY	APPR. BY
0	12-May-17	S.J. PARK	M.S. JU

Scroll Airend Engineering Data

LB5L

5HP, 0.8MPa(8bar)

Model

LB5L

SPECIFICATIONS OF SCROLL AIREND

Type	-	Oilfree, Single Stage
Air Delivery[FAD]	ℓ/min	430
Working Pressure	MPa(bar)	0.8~0.65(8~6.5)
Shaft Power	kW	3.7
Orbit Scroll Speed	rpm	3150
Discharge Air Temp.(ΔT)	°C	175
Orbit Scroll Drive Bearing	-	NU2204
Main Bearing - Orbit Scroll Side	-	6210
- Pulley Side	-	6305
Pincrank Bearing - Orbit Scroll Side	-	7301
- Housing Side	-	7303
Safety Device	-	Temp. Sensor
Cooling Method	-	Air Cooled By Sirocco Fan
Air Cleaning System	-	10micron/99.9% Dry Paper
Speed Up Method	-	V-Belt

GENERAL OPERATING CONDITION

Compression Gas	-	Air
Suction Pressure	MPa(bar)	Atmosphere
Location	-	Indoor
Ambient Temperature	°C	Max.40
Humidity	%	Below 85
Maximum Operating Temperature	°C	40
Minimum Operating Temperature	°C	0

DIMENSIONS

Overall Length	mm	344.5
Overall Width	mm	345
Overall Height	mm	290
Weight	kg	20
Air Outlet	A(B)	10(3/8") PF

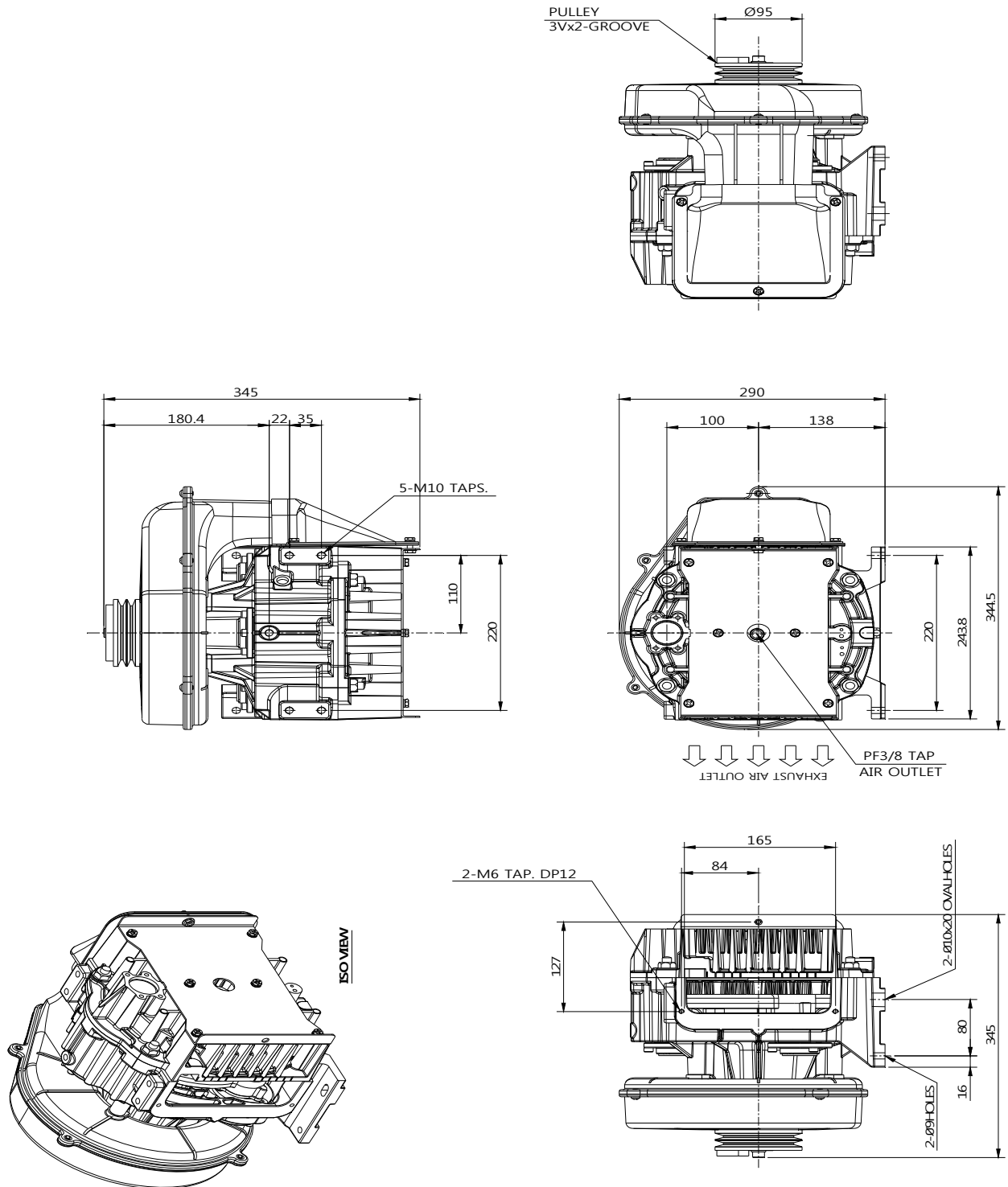
ACCESSORY

Suction Filter	A(B)	20(3/4")
Discharge Pipe	A(B)	10(3/8") PT

Note.

1. FAD[Free Air Delivery] is full package performance including all losses.
[Tested in accordance with ISO1217:1996 Annex C.]

Outside Drawing



ENGINEERING DATA

OILFREE SCROLL COMPRESSOR

LB5H **5HP, 0.99MPa(9.9bar)**

REV.NO	DATE	WRITTEN BY	APPR. BY
0	12-May-17	S.J. PARK	M.S. JU

Scroll Airend Engineering Data

LB5H

5HP, 0.99MPa(9.9bar)

Model

LB5H

SPECIFICATIONS OF SCROLL AIREND

Type	-	Oilfree, Single Stage
Air Delivery[FAD]	ℓ/min	352
Working Pressure	MPa(bar)	0.99~0.84(9.9~8.4)
Shaft Power	kW	3.7
Orbit Scroll Speed	rpm	2900
Discharge Air Temp.(ΔT)	°C	200
Orbit Scroll Drive Bearing	-	NU2204
Main Bearing - Orbit Scroll Side	-	6308
- Pulley Side	-	6305
Pincrank Bearing - Orbit Scroll Side	-	7302
- Housing Side	-	7303
Safety Device	-	Temp. Sensor
Cooling Method	-	Air Cooled By Sirocco Fan
Air Cleaning System	-	10micron/99.9% Dry Paper
Speed Up Method	-	V-Belt

GENERAL OPERATING CONDITION

Compression Gas	-	Air
Suction Pressure	MPa(bar)	Atmosphere
Location	-	Indoor
Ambient Temperature	°C	Max.40
Humidity	%	Below 85
Maximum Operating Temperature	°C	40
Minimum Operating Temperature	°C	0

DIMENSIONS

Overall Length	mm	344.5
Overall Width	mm	345
Overall Height	mm	290
Weight	kg	20
Air Outlet	A(B)	10(3/8") PF

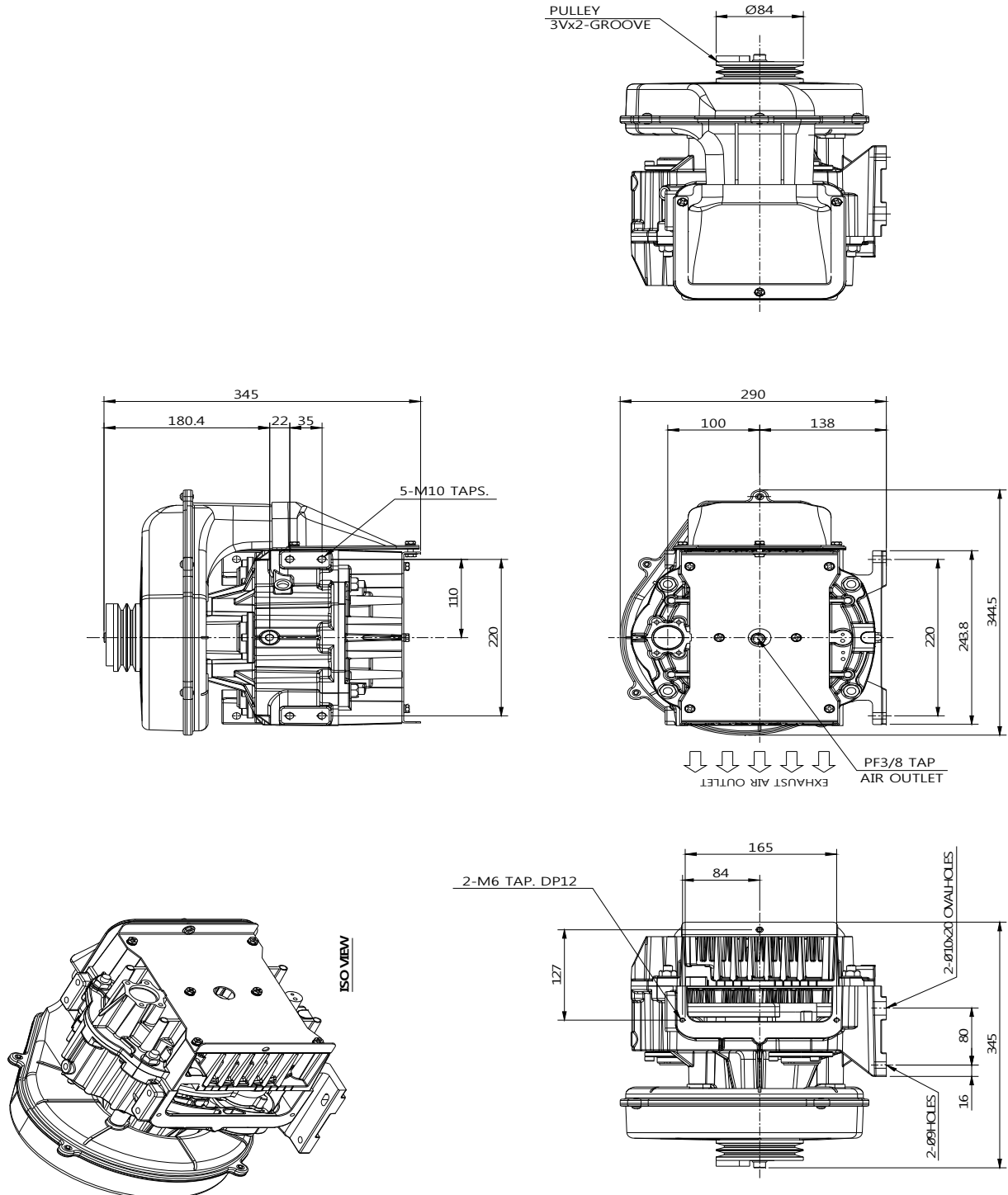
ACCESSORY

Suction Filter	A(B)	20(3/4")
Discharge Pipe	A(B)	10(3/8") PT

Note.

1. FAD[Free Air Delivery] is full package performance including all losses.
[Tested in accordance with ISO1217:1996 Annex C.]

Outside Drawing



ENGINEERING DATA

OILFREE SCROLL COMPRESSOR

LB3L

3HP, 0.8MPa(8bar)

REV.NO	DATE	WRITTEN BY	APPR. BY
0	12-May-17	S.J. PARK	M.S. JU

Scroll Airend Engineering Data

LB3L

3HP, 0.8MPa(8bar)

Model

LB3L

SPECIFICATIONS OF SCROLL AIREND

Type	-	Oilfree, Single Stage
Air Delivery[FAD]	ℓ/min	260
Working Pressure	MPa(bar)	0.8~0.65(8~6.5)
Shaft Power	kW	2.2
Orbit Scroll Speed	rpm	2200
Discharge Air Temp.(ΔT)	°C	165
Orbit Scroll Drive Bearing	-	NU2204
Main Bearing - Orbit Scroll Side	-	6308
- Pulley Side	-	6305
Pincrank Bearing - Orbit Scroll Side	-	7302
- Housing Side	-	7303
Safety Device	-	Temp. Sensor
Cooling Method	-	Air Cooled By Sirocco Fan
Air Cleaning System	-	10micron/99.9% Dry Paper
Speed Up Method	-	V-Belt

GENERAL OPERATING CONDITION

Compression Gas	-	Air
Suction Pressure	MPa(bar)	Atmosphere
Location	-	Indoor
Ambient Temperature	°C	Max.40
Humidity	%	Below 85
Maximum Operating Temperature	°C	40
Minimum Operating Temperature	°C	0

DIMENSIONS

Overall Length	mm	344.5
Overall Width	mm	345
Overall Height	mm	290
Weight	kg	20
Air Outlet	A(B)	10(3/8") PF

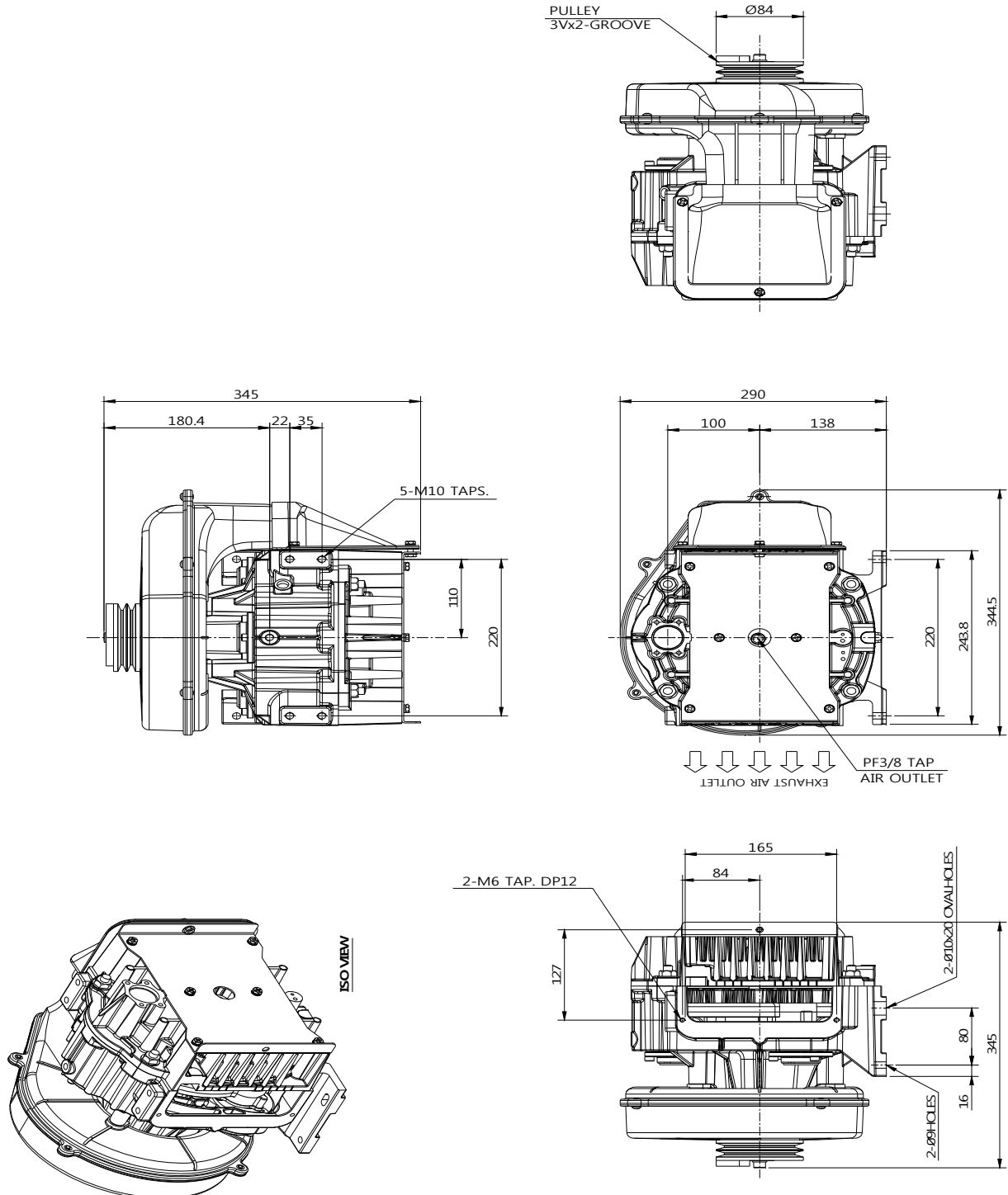
ACCESSORY

Suction Filter	-	20(3/4")
Discharge Pipe	-	10(3/8") PT

Note.

1. FAD[Free Air Delivery] is full package performance including all losses.
[Tested in accordance with ISO1217:1996 Annex C.]

Outside Drawing



ENGINEERING DATA

OILFREE SCROLL COMPRESSOR

LB3H **3HP, 0.99MPa(9.9bar)**

REV.NO	DATE	WRITTEN BY	APPR. BY
0	12-May-17	S.J. PARK	M.S. JU

Scroll Airend Engineering Data

LB3H

3HP, 0.99MPa(9.9bar)

Model

LB3H

SPECIFICATIONS OF SCROLL AIREND

Type	-	Oilfree, Single Stage
Air Delivery[FAD]	ℓ/min	225
Working Pressure	MPa(bar)	0.99~0.84(9.9~8.4)
Shaft Power	kW	2.2
Orbit Scroll Speed	rpm	2000
Discharge Air Temp.(ΔT)	°C	160
Orbit Scroll Drive Bearing	-	NU2204
Main Bearing - Orbit Scroll Side	-	6308
- Pulley Side	-	6305
Pincrank Bearing - Orbit Scroll Side	-	7302
- Housing Side	-	7303
Safety Device	-	Temp. Sensor
Cooling Method	-	Air Cooled By Sirocco Fan
Air Cleaning System	-	10micron/99.9% Dry Paper
Speed Up Method	-	V-Belt

GENERAL OPERATING CONDITION

Compression Gas	-	Air
Suction Pressure	MPa(bar)	Atmosphere
Location	-	Indoor
Ambient Temperature	°C	Max.40
Humidity	%	Below 85
Maximum Operating Temperature	°C	40
Minimum Operating Temperature	°C	0

DIMENSIONS

Overall Length	mm	344.5
Overall Width	mm	345
Overall Height	mm	290
Weight	kg	20
Air Outlet	A(B)	10(3/8") PF

ACCESSORY

Suction Filter	A(B)	20(3/4")
Discharge Pipe	A(B)	10(3/8") PT

Note.

1. FAD[Free Air Delivery] is full package performance including all losses.
[Tested in accordance with ISO1217:1996 Annex C.]

Outside Drawing

