



ESCURTIS



REFRIGERATED COMPRESSED
AIR DRYERS
7-1200 SCFM

RIM SERIES



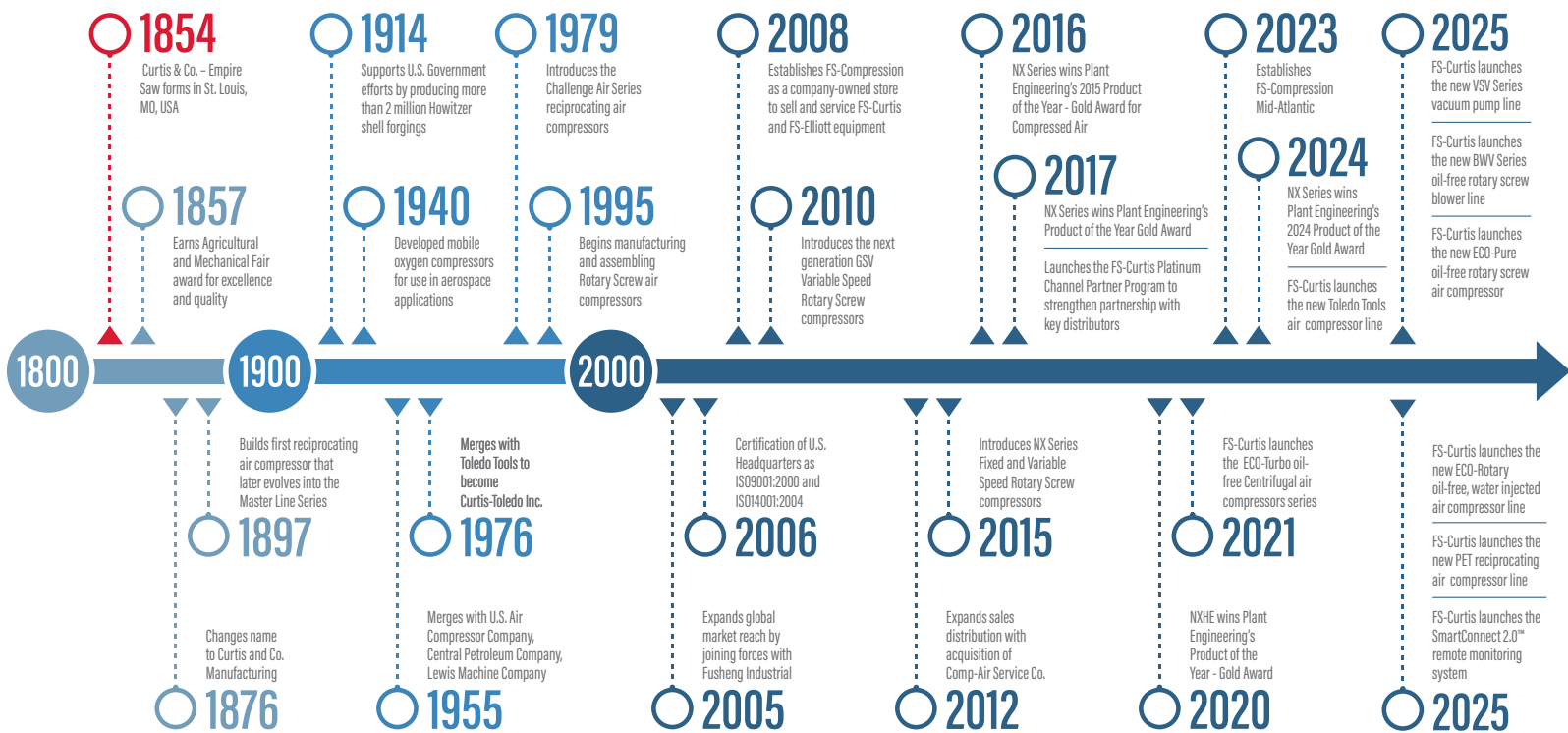
**SOME COMPANIES ARE FOUNDED ON HARD WORK.
OTHERS ARE FOUNDED ON IDEALS.**

FS-CURTIS WAS FOUNDED ON BOTH.

One hundred and seventy years ago, the FS-Curtis way of doing business was established through two key commitments: a dedication to building quality products and a dedication to responsive customer service.

Over the decades, the company and its products have evolved through innovation and new technologies. But those commitments to quality and service remain unchanged. Today, just as in 1854, FS-Curtis customers can depend on our products for reliable, long-term service. Equally as important, they can rely on getting the same from our people.

A HISTORY OF EXCELLENCE



RN SERIES NON-CYCLING REFRIGERATED COMPRESSED AIR DRYERS

Sometimes a simple solution is all you need. With their small design and compact footprint, RN dryers take the basics to new heights, delivering reliable performance day in and day out you've come to expect from FS-Curtis. They remove maximum moisture to increase efficiency and help you get the most from your equipment.

The perfect blend of technology and simplicity, RN dryers are easy to operate and maintain. Best of all, they're reliable. You can count on an ISO 8573.1 Air Quality Class 4 to Class 5 pressure dew point for efficient, effective delivery of clean, dry, consistent-quality compressed air.



RN SERIES NON-CYCLING REFRIGERATED COMPRESSED AIR DRYERS

BETTER BY DESIGN

- Simple and reliable copper tube-on-tube heat exchange for RNB7-50
- Stainless-steel brazed plate heat exchanger for RNB75-1200
- Designed with quality components for extended service life
- At-a-glance control panel dew point indication verifies performance

RELIABLE CONDENSATE MANAGEMENT

- Models 7-15 scfm: Pneumatically operated internal float drain
- Models 25-1200 Furnished with a timed electric condensate drain

SAFETY FIRST - ENVIRONMENTALLY FRIENDLY

- Models 7-1200 scfm R513A refrigerant, a low Global Warming Potential (GWP) refrigerant.
- R513A low global warming potential refrigerant sharply reduced global warming potential
- Excellent Thermal & Energy Performance

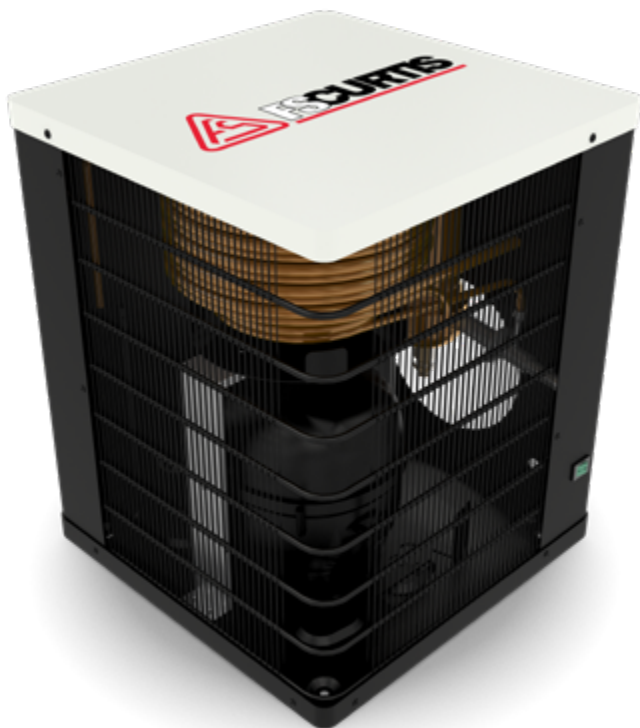


RN SERIES

TECHNICAL DATA

| MODEL | INLET FLOW SCFM* | VOLTAGES | IN/OUT AIR CONNECT SIZE | DIMENSIONS L x W x H in. | WEIGHT lbs. | |
|---------|---------------------|----------------------------------|----------------------------------|-----------------------------|--------------------|-----|
| RNB7 | 7 | 115/1/60 | 3/8" MNPT | 14.4 x 16.7 x 17.5 | 47 | |
| RNB11 | 11 | | 3/8" MNPT | 14.4 x 16.7 x 17.5 | 47 | |
| RNB15 | 15 | | 3/8" MNPT | 14.4 x 16.7 x 17.5 | 47 | |
| RNB25 | 25 | | 1/2" FNPT | 17.9 x 20.2 x 21.0 | 63 | |
| RNB32 | 32 | | 1/2" FNPT | 17.9 x 20.2 x 21.0 | 63 | |
| RNB42 | 42 | | 1/2" FNPT | 17.9 x 20.2 x 21.0 | 74 | |
| RNB50 | 50 | | 1/2" FNPT | 17.9 x 20.2 x 21.0 | 74 | |
| RNB75 | 75 | | 1" NPT | 19.3 x 37.2 x 32.3 | 123 | |
| RNB100 | 100 | | 1" NPT | 19.3 x 37.2 x 32.3 | 129 | |
| RNB125 | 125 | | 1" NPT | 19.3 x 37.2 x 32.3 | 135 | |
| RNB150 | 150 | | 1" NPT | 19.3 x 37.2 x 32.3 | 152 | |
| RNB200 | 200 | | Standard Voltage 460 / 3 / 60 | 2" NPT | 24.4 x 41.5 x 36.3 | 196 |
| RNB250 | 250 | | | 2" NPT | 24.4 x 41.5 x 36.3 | 204 |
| RNB300 | 300 | | | 2" NPT | 24.4 x 48.7 x 38.2 | 252 |
| RNB400 | 400 | 2" NPT | | 24.4 x 48.7 x 38.2 | 279 | |
| RNB500 | 500 | 2" NPT | | 24.4 x 48.7 x 38.2 | 328 | |
| RNB600 | 600 | Optional Voltage 575 / 3 / 60 | | 2" NPT | 26.1 x 48.7 x 38.5 | 467 |
| RNB800 | 800 | | | 3" FLG | 34.9 x 49.2 x 64.6 | 836 |
| RNB1000 | 1000 | | | 4" FLG | 34.9 x 49.2 x 68.9 | 889 |
| RNB1200 | 1200 | | 4" FLG | 34.9 x 63.1 x 68.9 | 961 | |

*Rated Flow Capacity - Conditions for rating above dryers are: compressed air at dryer inlet: 100 psig and 100° F saturated; operating on 60 Hz power supply. At rated conditions, pressure drop is less than 5 psi.



STANDARD WARRANTY

- RNB Series 10 and 15 scfm: standard 1-year warranty parts and labor
- RNB Series 25 - 1200 scfm: standard 2-year warranty parts and labor

CONTINUED COMMITMENT

A company history that dates 170 years is a company history that, to us, is just the beginning. FS-Curtis is committed to offering a world-class portfolio of products. Through the dependability of our people and our quality-focused manufacturing, FS-Curtis will continue to be the most trusted and dependable name in compressed air serving even more markets through our ever-growing global presence.

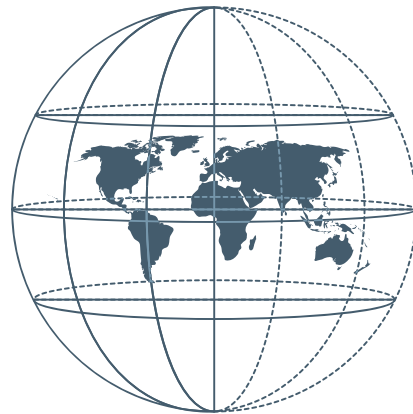


You can count on **FS-Curtis** to approach the next 170 years by staying true to the values and strengths that are appreciated by our customers today.

A WORLD OF DIFFERENCE

The FS-Curtis headquarters in St. Louis, Missouri, U.S.A. is the anchor of a larger global network. FS-Curtis builds quality products – and a quality reputation – at locations around the world.

In addition to our manufacturing and packaging locations, a large global network of sales agents and distributors ensures that sales and service support is available around the world, day in and day out.



ST. LOUIS, MO USA (HEADQUARTERS)

TAIPEI, TAIWAN (FUSHENG HQ) | SHANGHAI, CHINA (FUSHENG)
PITTSBURGH, PA USA (FS-ELLIOTT) | KONGEN, GERMANY (ALMIG)
PUNE, INDIA (FS-CURTIS) | HO CHI MINH CITY, VIETNAM (FUSHENG)

Distributed By:



CURTIS-TOLEDO, INC.

1905 KIENLEN AVENUE | ST. LOUIS, MO 63133

+1 314-383-1300 | WWW.FSCURTIS.COM | INFO@FSCURTIS.COM



CORPLITERATURE: FSL-RNB/RNP_SERIES_REV1 Improvements and research are continuous at FS-Curtis. Specifications may change without notice.

© 2026 CURTIS-TOLEDO, INC.