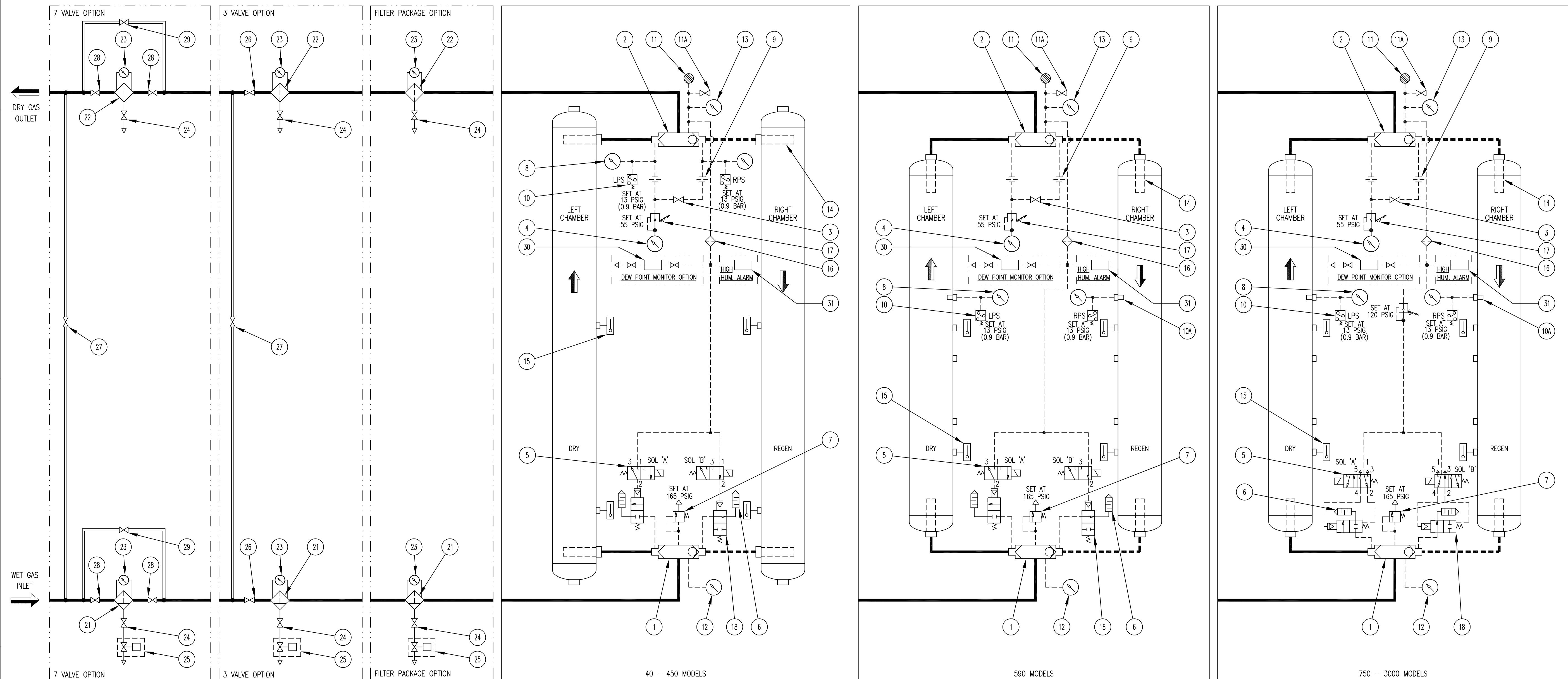
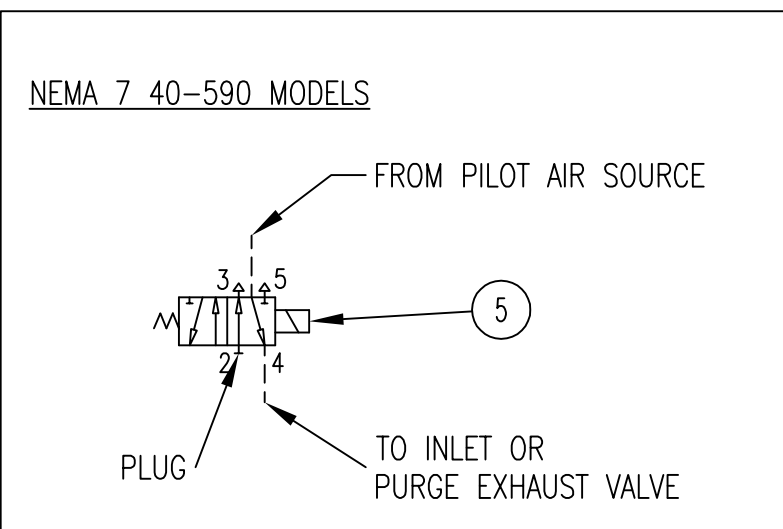


- REVISIONS -							
ZONE	REV	DESCRIPTION	CHG BY	CHK BY	APP BY	REL BY	DATE
-	A	ADDED 7 VALVE OPTION.	SDM	DEH	DEH	SDM	12/08/05
C-2	B	ADDED PRESSURE REGULATOR (SET AT 120 PSIG).	MHO	DEH	DEH	SDM	12/19/05
-	C	ADDED DETAIL FOR NEMA 7 40-590 MODELS.	MHO	DEH	DEH	SDM	03/20/06
-	D	ADDED DEW POINT MONITOR, HIGH HUM ALARM & NOTE 4.	MHO	DEH	DEH	SDM	03/30/06
-	E	CHANGED # 10 FROM SET AT 45 PSIG TO SET AT 13 PSIG	GCJ	SDM	SDM	SDM	03/06/09
-	F	UPDATED LOGO AND NOTE 1.	CRH	CRH	CRH	SDM	12/16/13
-	G	MOVED PRESSURE SWITCHES TO TOP LOCATION	MHO	DEH	DEH	MHO	10/13/16



- LEGEND**
1. INLET SHUTTLE VALVE ASSEMBLY
 2. OUTLET SHUTTLE VALVE ASSEMBLY
 3. PURGE ADJUSTING VALVE
 4. PURGE FLOW INDICATOR
 5. SOLENOID VALVE
 6. MUFFLER
 7. RELIEF VALVE
 8. CHAMBER PRESSURE GAUGE
 9. ORIFICE
 10. PRESSURE SWITCH (HCS/HCL ONLY)
 - 10A. FILTER BUSHING
 11. MOISTURE INDICATOR
 - 11A. BLEED VALVE
 12. INLET PRESSURE GAUGE (HCS/HCL ONLY)
 13. OUTLET PRESSURE GAUGE (HCS/HCL ONLY)
 14. BUSHING SCREEN
 15. COMPUSAVE EMS (HCS ONLY)
 16. PILOT GAS FILTER
 17. PRESSURE REGULATOR
 18. PURGE EXHAUST VALVE
 21. PREFILTER
 22. AFTERFILTER
 23. DIFFERENTIAL PRESSURE GAUGE
 24. SERVICE VALVE
 25. DRAIN VALVE
 26. SYSTEM BLOCK VALVE
 27. SYSTEM BYPASS VALVE
 28. FILTER BLOCK VALVE
 29. FILTER BYPASS VALVE
 - DEW POINT MONITOR OPTION
 30. DEW POINT MONITOR
 - HIGH HUMIDITY ALARM OPTION
 31. HIGH HUMIDITY ALARM

- NOTES**
1. SYMBOLS ARE PER ISO-1219-1:2006 "GRAPHIC SYMBOLS FOR FLUID POWER DIAGRAM".
 2. AS SHOWN FLOW DIRECTION IS:
 - LEFT CHAMBER DRYING
 - - - RIGHT CHAMBER REGEN
 - PILOT GAS LINE
 3. SOLENOID VALVE 'A' IS SHOWN DE-ENERGIZED; SOLENOID VALVE 'B' IS SHOWN ENERGIZED.
 4. □ □ □ □ INDICATES OPTION



UNLESS OTHERWISE SPECIFIED:		NAME	DATE	UNAUTHORIZED USE, MANUFACTURE, OR REPRODUCTION IN WHOLE OR IN PART IS PROHIBITED. DRAWING DESIGN AND OTHER DISCLOSURES ARE PROPERTY OF Deltech * DO NOT SCALE. USE DIMENSIONS ONLY *
DIMENSIONS ARE IN: N/A		DWN BY	SDM 09/02/05	
SURFACE FINISH: N/A ✓		ENG BY	DEH 09/02/05	
TOL.	MM	CHK BY	CRH 09/02/05	
.X	-	APP BY	DEH 09/02/05	
.XX	-	REL BY	SDM 09/02/05	
.XXX	-			
FRACT: N/A	ANG: N/A	MAT NO.	---	SIZE: DWG. NO.
SCALE: NONE	WT: N/A			D 0059108-D1
				REV. SHEET 1/1

PIPING & INSTRUMENTATION DIAGRAM
HCS/HCL/HCT 40-3000