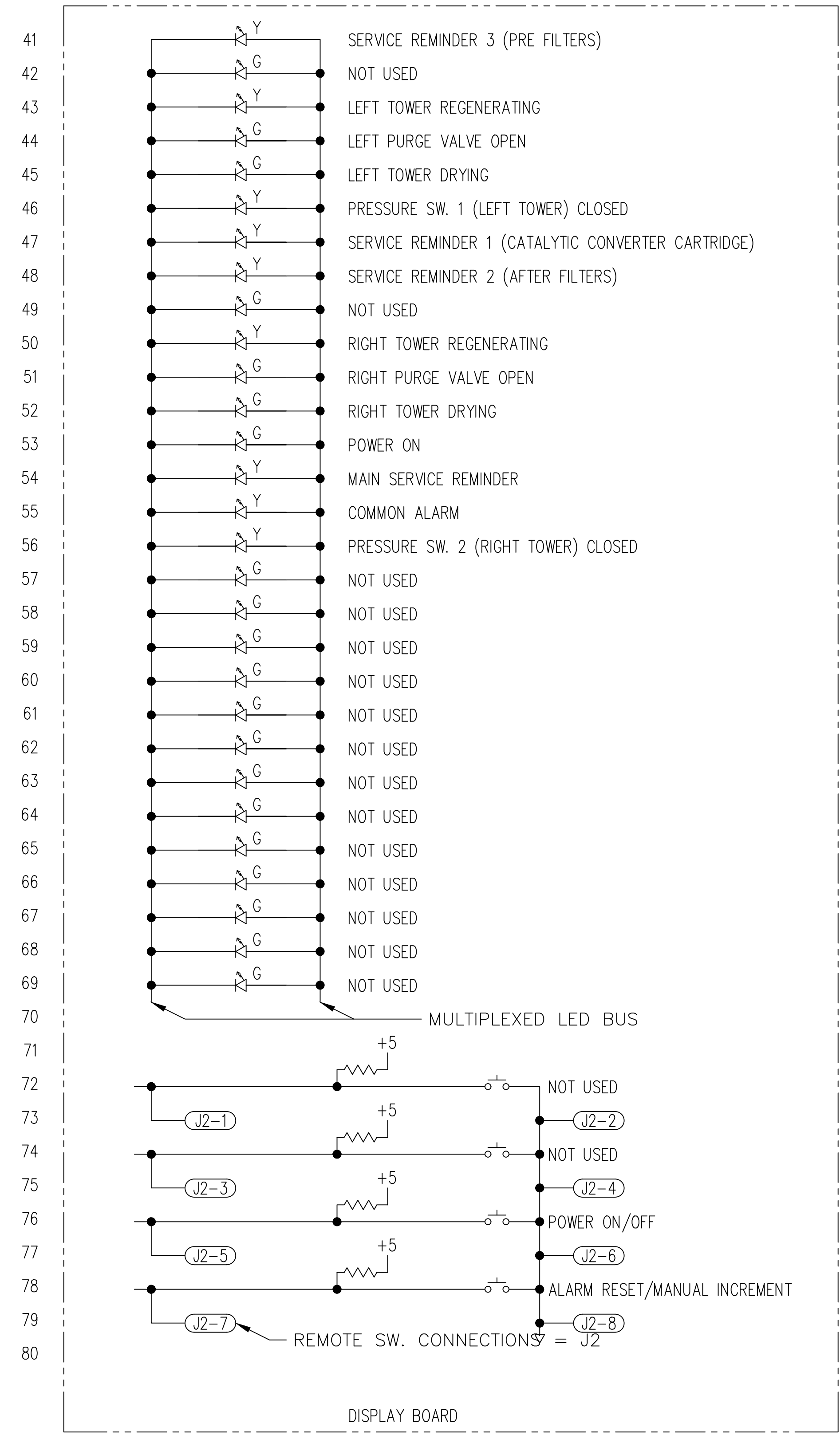
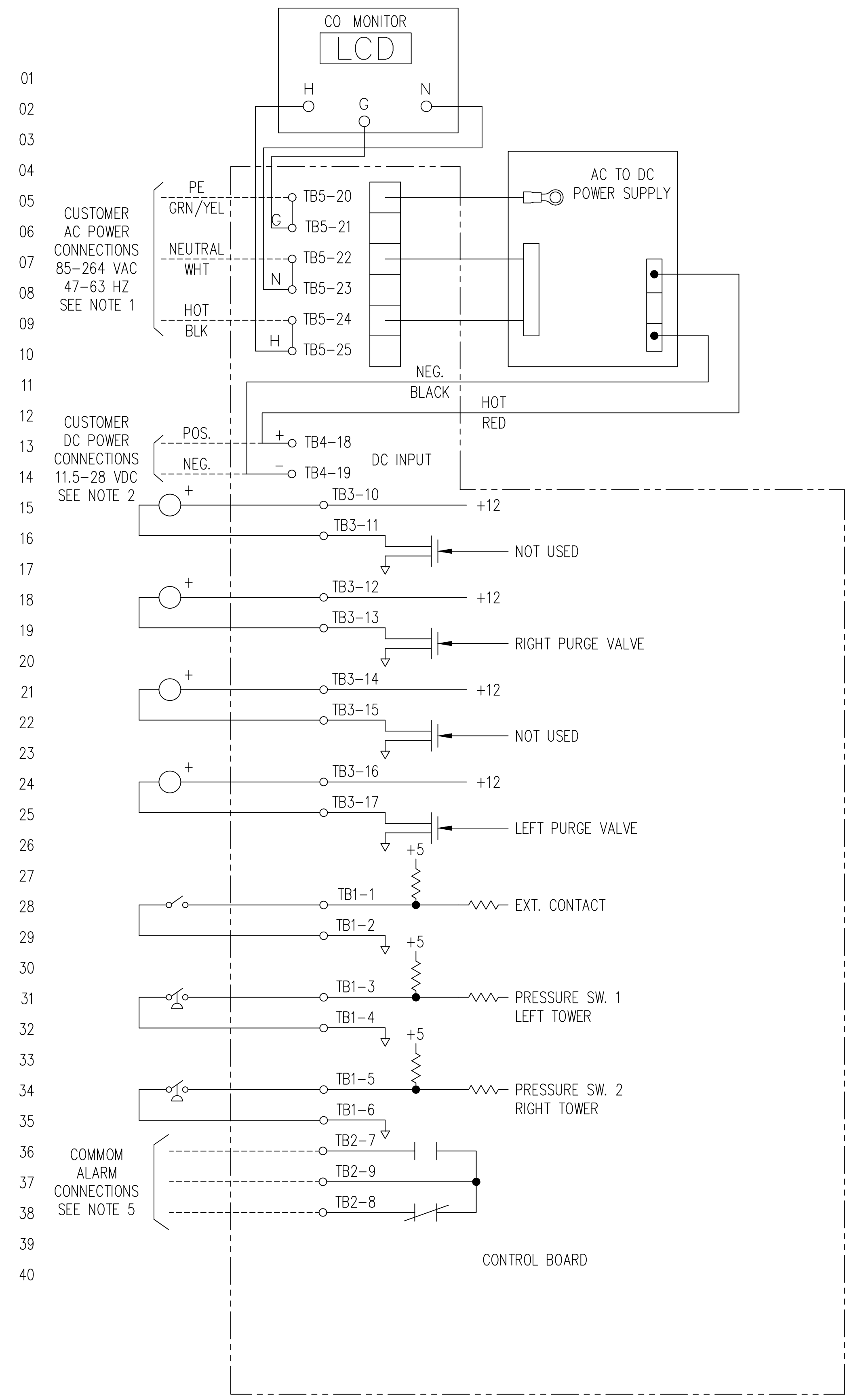


- REVISIONS -							
ZONE	REV	DESCRIPTION	CHG BY	CHK BY	APP BY	REL BY	DATE
-	A	47-63 HZ WAS 47-400 HZ	JBR	KJN	KJN	SDM	07/22/08
-	B	ADDED CO MONITOR	MHO	KJN	KJN	SDM	07/24/08



NOTES:

- CUSTOMER POWER CONNECTIONS WHEN SUPPLY VOLTAGE IS AC (ALTERNATING CURRENT). TERMINALS TB5-21, TB5-23 AND TB5-25 CAN BE USED TO PROVIDE ACCESSORY POWER AT THE SAME VOLTAGE AND FREQUENCY. AC POWER IS DIRECTED TO POWER SUPPLY BOARD WHERE IT IS CONVERTED TO 12 VDC AND RETURNED TO THE CONTROL BOARD.
- CUSTOMER POWER CONNECTIONS WHEN SUPPLY VOLTAGE IS DC (DIRECT CURRENT). RED AND BLACK WIRES FROM THE POWER SUPPLY BOARD SHOULD BE REMOVED AND THE CUSTOMER SHOULD MAKE THEIR POWER CONNECTIONS AT TERMINALS TB4-18 AND TB4-19.
- VOLTAGE RATING OF VALVES IS 12 VDC.
- VOLTAGE RATING OF SWITCHES IS 5 VDC.
- WITH UNIT ON AND NO ALARMS, THERE SHOULD BE CONTINUITY BETWEEN TERMINALS TB2-7 AND TB2-9.

UNLESS OTHERWISE SPECIFIED:		NAME	DATE	UNAUTHORIZED USE, MANUFACTURE, OR REPRODUCTION IN WHOLE OR IN PART IS PROHIBITED. DRAWING DESIGN AND OTHER DISCLOSURES ARE PROPERTY OF: deltechusa.com * DO NOT SCALE. USE DIMENSIONS ONLY *
DIMENSIONS ARE IN: N/A		DWN BY	TDB 11.26.07	
SURFACE FINISH: N/A		ENG BY	TDB 11.26.07	
TOL. MM INCHES		CHK BY	TDB 11.26.07	
X. - -		APP BY	TDB 11.26.07	
.XX - -		REL BY	SDM 11.26.07	
.XXX - -		MAT NO.	----	ELECTRICAL SCHEMATIC BREATHING AIR LEVEL 1 CONTROLLER
FRACT: N/A	ANG: N/A	SIZE	DWG. NO.	
SCALE: NONE	WT: N/A	REV.	SHEET	