

4

3

2

1

- REVISIONS -

ZONE	REV	DESCRIPTION	CHG BY	CHK BY	APP BY	REL BY	DATE
-	A	UPDATE PILOT AIR FILTER TO NGF STYLE.	NDM	SDM	DEH	SDM	07/02/14
-	B	307 PRE AND AFTERFILTERS WERE 306.	SDM	DEH	DEH	SDM	06/30/15

NOTES:

- THIS DRAWING, TOGETHER WITH P&ID AND SPECIFICATION SHEET, PROVIDES OPERATING CONDITIONS, SPECIFICATIONS, INSTALLATION, MOUNTING AND CONNECTION REQUIREMENTS.
- DESICCANT DRYER CHAMBERS ARE DESIGNED AND BUILT IN ACCORDANCE WITH THE CURRENT CODE AND ADDENDA OF SECTION VIII, DIV. I, OF THE A.S.M.E. CODE FOR UNFIRED PRESSURE VESSELS.
- ELECTRICAL CONSTRUCTION IS IN ACCORDANCE WITH THE NATIONAL ELECTRICAL CODE.
- ANCHOR BOLTS ARE TO PROJECT A MINIMUM OF 2" ABOVE THE FOUNDATION. ANCHOR BOLTS SHOULD BE INSTALLED IN SLEEVES TO ALLOW SOME ADJUSTMENT AT TIME OF INSTALLATION.
- EXTERNAL PIPING MUST BE RIGIDLY MOUNTED AND NOT SUPPORTED BY THIS UNIT.
- FOR MAINTENANCE PURPOSES, RECOMMENDED CLEARANCE AROUND UNIT IS 4 FEET [1220 MM].
- BREATHING AIR PURIFIERS CANNOT BE SUPPLIED WITH, OR REACTIVATED BY, ANY GAS OTHER THAN AIR. DO NOT PIPE PURGE EXHAUST TO A REMOTE LOCATION WITHOUT CONSULTING THE FACTORY.
- CUSTOMER SHOULD REQUEST A COPY OF QMS-013 IF PLANNING ON STORING UNIT LONG TERM BEFORE PLACING INTO SERVICE.

9. OPERATING CONDITIONS:

INLET AIR PRESSURE:	
MAXIMUM:	150 PSIG 10.5 KGF/CM2
MINIMUM:	60 PSIG 4.2 KGF/CM2
DESIGN:	100 PSIG 7.0 KGF/CM2
INLET AIR TEMPERATURE:	
MAXIMUM:	140 °F 60 °C
MINIMUM:	35 °F 1.7 °C
DESIGN:	100 °F 37.8 °C
AMBIENT AIR TEMPERATURE:	
MAXIMUM:	120 °F 48.9 °C
MINIMUM:	35 °F 1.7 °C
DESIGN:	100 °F 37.8 °C
AIR FLOW:	
INLET:	90 SCFM @ 100 PSIG & 100 °F
	153 M3/HR @ 7.0 KGF/CM2 & 37.8 °C
OUTLET:	75 SCFM @ 100 PSIG & 100 °F
	127 M3/HR @ 7.0 KGF/CM2 & 37.8 °C

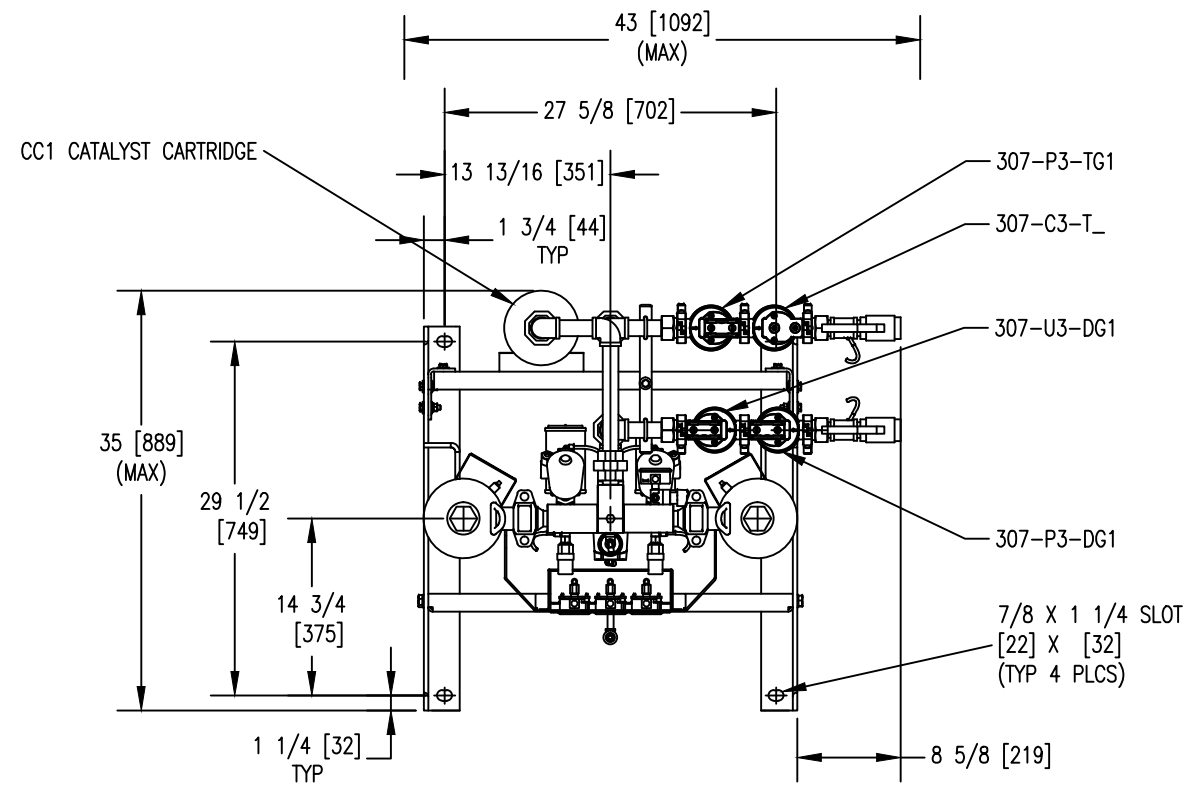
10. SUPPLY POWER:

85-264 VAC, 1 PH, 47-63 HZ OR 11.5-28 VDC

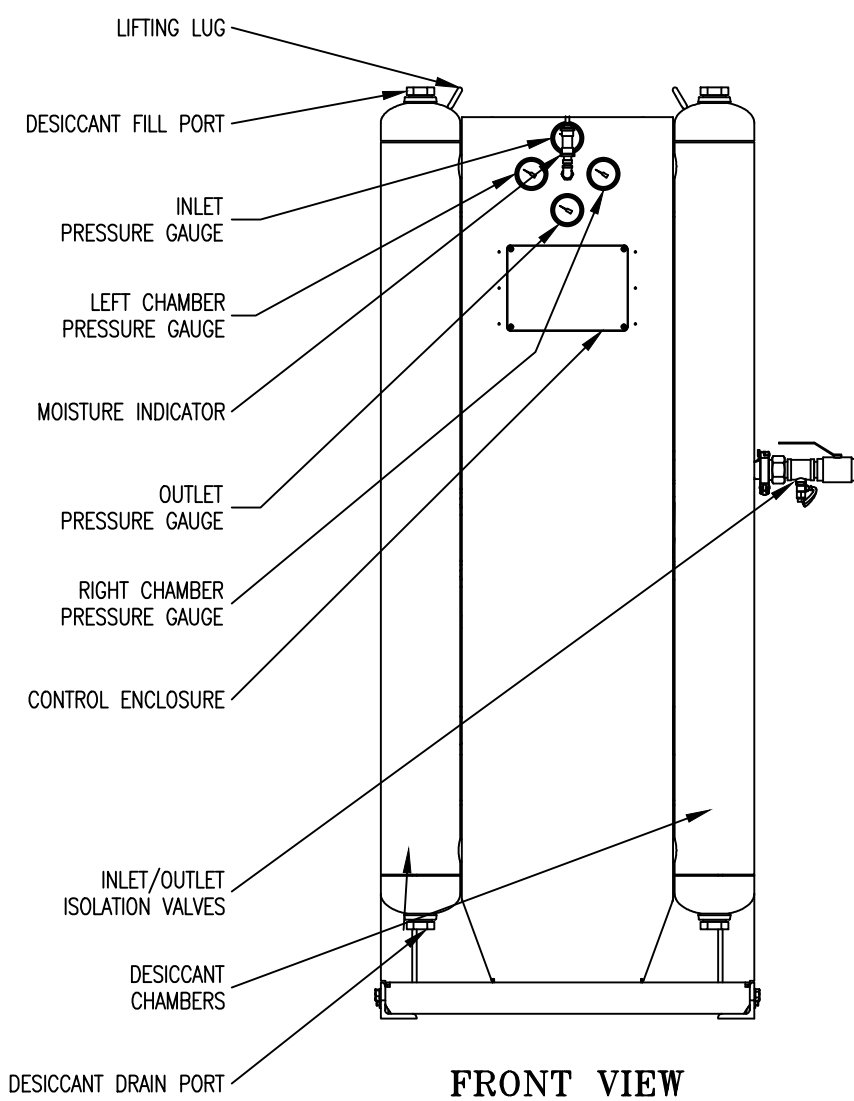
11. AVAILABLE OPTIONS:

- L2 - ADVANCED CONTROLLER WITH:
VACUUM FLUORESCENT TEXT DISPLAY
PURGE SAVER(R) AUTOMATIC ENERGY SAVINGS
HIGH INLET AIR TEMPERATURE ALARM
LOW INLET AIR PRESSURE ALARM
- N7 - NEMA7 ELECTRICAL RATING
- CB - COPPER INSTRUMENT TUBING
- SS - STAINLESS STEEL INSTRUMENT TUBING, FITTINGS, AND GAUGES
- AZ1 - CO MONITOR
- AZ2 - CO & OXYGEN MONITOR
- AZ3 - CO & DEW POINT MONITOR
- AZ4 - CO, OXYGEN, & DEW POINT MONITOR
- 10 - SSPC-SP10 SANDBLAST & EPOXY PAINT

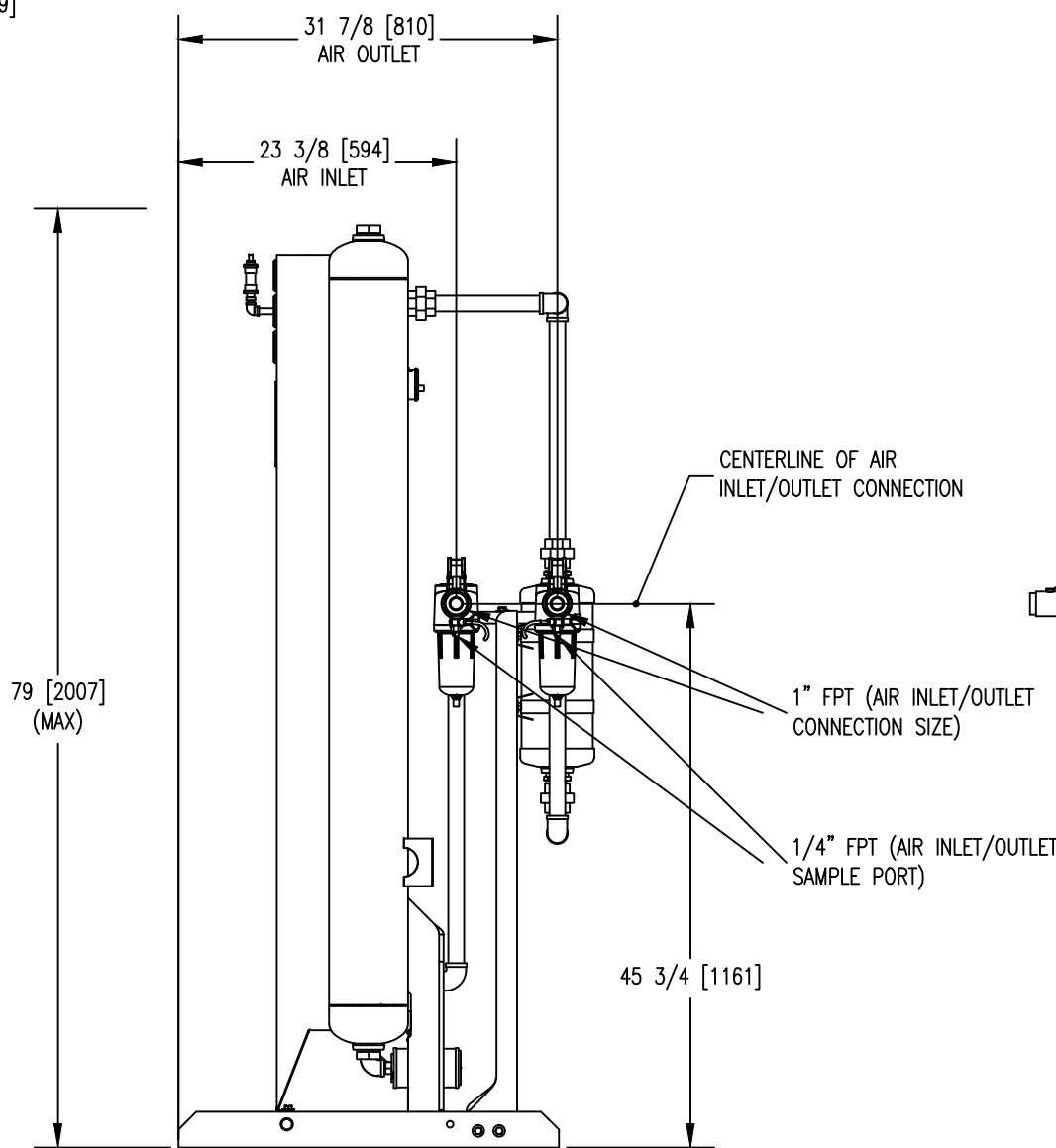
12. WEIGHTS: SHIPPING WEIGHT	700 LBS. (APPROX.)
	319 KGS
OPERATING WEIGHT	700 LBS. (APPROX.)
	319 KGS



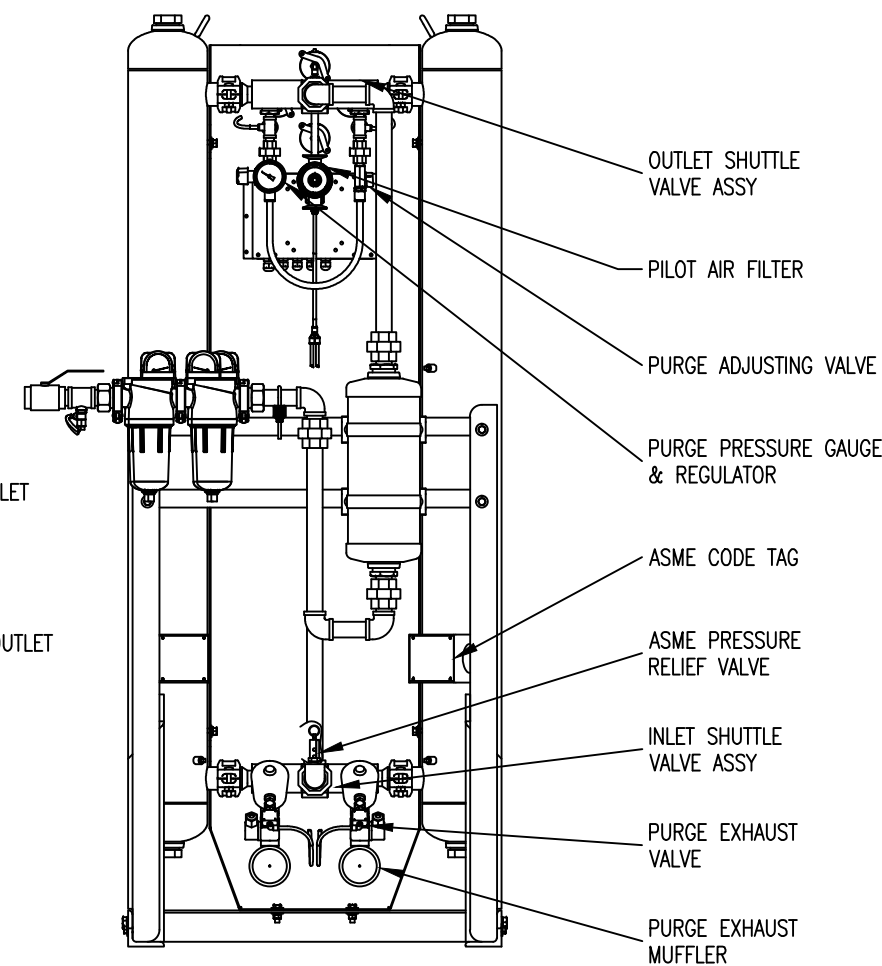
TOP VIEW



FRONT VIEW



SIDE VIEW



REAR VIEW

UNLESS OTHERWISE SPECIFIED:		NAME	DATE	UNAUTHORIZED USE, MANUFACTURE, OR REPRODUCTION IN WHOLE OR IN PART IS PROHIBITED. DRAWING DESIGN AND OTHER DISCLOSURES ARE PROPERTY OF: Deltech * DO NOT SCALE. USE DIMENSIONS ONLY * GENERAL ARRANGEMENT DM 75, BREATHING AIR PURIFIER, NGF
DIMENSIONS ARE IN INCHES/MM		DWN BY	MDB 04/30/14	
SURFACE FINISH: N/A ✓		ENG BY	SDM 04/30/14	
TOL.	MM	CHK BY	SDM 04/30/14	
.X	-	APP BY	SDM 04/30/14	
.XX	-	REL BY	SDM 04/30/14	
.XXX	-			
FRACT: ±1/2	ANG: ±2°	MAT NO.	----	
SCALE: 1/16	WT: N/A	SIZE	C	
		DWG. NO.	0072208-75	
		REV.	B 1/1	

4

3

2

1