

SMART-GUARD-MINI

Electronic zero air loss condensate drain

PRODUCT FEATURES

The SMART-GUARD-MINI is a zero air-loss drain designed for smaller compressed air applications.

The SMART-GUARD-MINI incorporates the reliable JORC direct acting valve assembly with FPM seals, offering a pressure range of 0 to 230 PSI.

The solid and robust aluminium housing design has also been incorporated in to this model, following suite with the larger SMART-GUARD models.



With an inlet connection height of only 2,9" this is an incredibly compact solution with unrivaled installation versatility and reliability.

The weight of the SMART-GUARD-MINI is only 1 lbs!

The maximum compressor capacity of this drain is 350 CFM and typical draining applications include fridge dryers and filters - mainly due to its incredible compact size.

COMMERCIAL BENEFITS

- Extremely compact and lightweight unit
- True zero air-loss solution
- One model covers all compressor capacities up to 350 CFM
- No sizing chart required, offering stocking advantages
- The serviceable valve offers maintenance opportunities
- Personal branding opportunities

TECHNICAL ADVANTAGES

- Zero air-loss during the condensate discharge
- Easy to install due to its low inlet height
- External valve position allows for fast and easy maintenance
- Direct acting valve with FPM seal
- Robust corrosion resistant aluminium housing
- A large integrated mesh strainer
- Incorporating a smart-self-cleaning valve modus

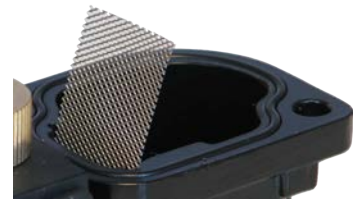
SMART-GUARD-MINI

Electronic zero air loss condensate drain

DIMENSIONS



Incredibly compact!



Integrated mesh filter

TECHNICAL SPECIFICATIONS

Max. compressor capacity	350 CFM
Max. drainage capacity	12 gallon per hour at 230 psi (16 bar)
Pressure range	0 - 230 PSI (0 - 16 bar)
Valve type	2/2 way, direct acting
Valve orifice	2 mm
Valve seals	FPM
Inlet connection	1/2" NPT or BSP
Inlet height	2,9"
Outlet connection	1/4" BSP
Medium temperature	34 - 122 °F (1 - 50 °C)
Ambient temperature	34 - 122 °F (1 - 50 °C)
Supply voltage options	230VAC / 115VAC / 24VAC / 24VDC
Power connector	DIN 43650-B
Serviceable valve	Yes
TEST feature	Yes
Environmental protection	NEMA4 (IP65)
Integrated mesh strainer	Yes
Housing material	Corrosion resistant aluminium, EP coating



JORC's direct acting valve assembly, offering you reliability

JORC is NEN - EN - ISO 9001:2015 certified

Information provided herewith is believed to be accurate and reliable. However, no responsibility is assumed for its use or for any infringement of patents or rights of others, which may result from its use. In addition, JORC reserves the right to revise information without notice and without incurring any obligation.

JORC Industrial LLC
 1146 River Road
 New Castle, DE 19720
 USA

Tel +1 302-395-0310
 Fax +1 302-395-0312
 E-mail info@jorc.com
 http:// www.jorc.com

