



FSCURTIS

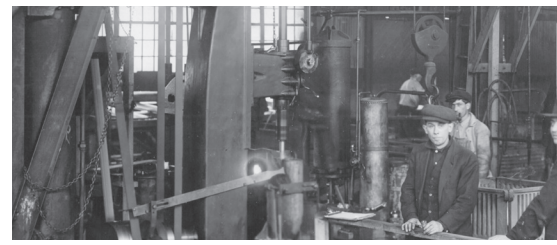


**MASTERLINE PRESSURE LUBRICATED
AIR COMPRESSORS 5 - 30 HP**

**Manufactured in
America since 1854**



ML SERIES



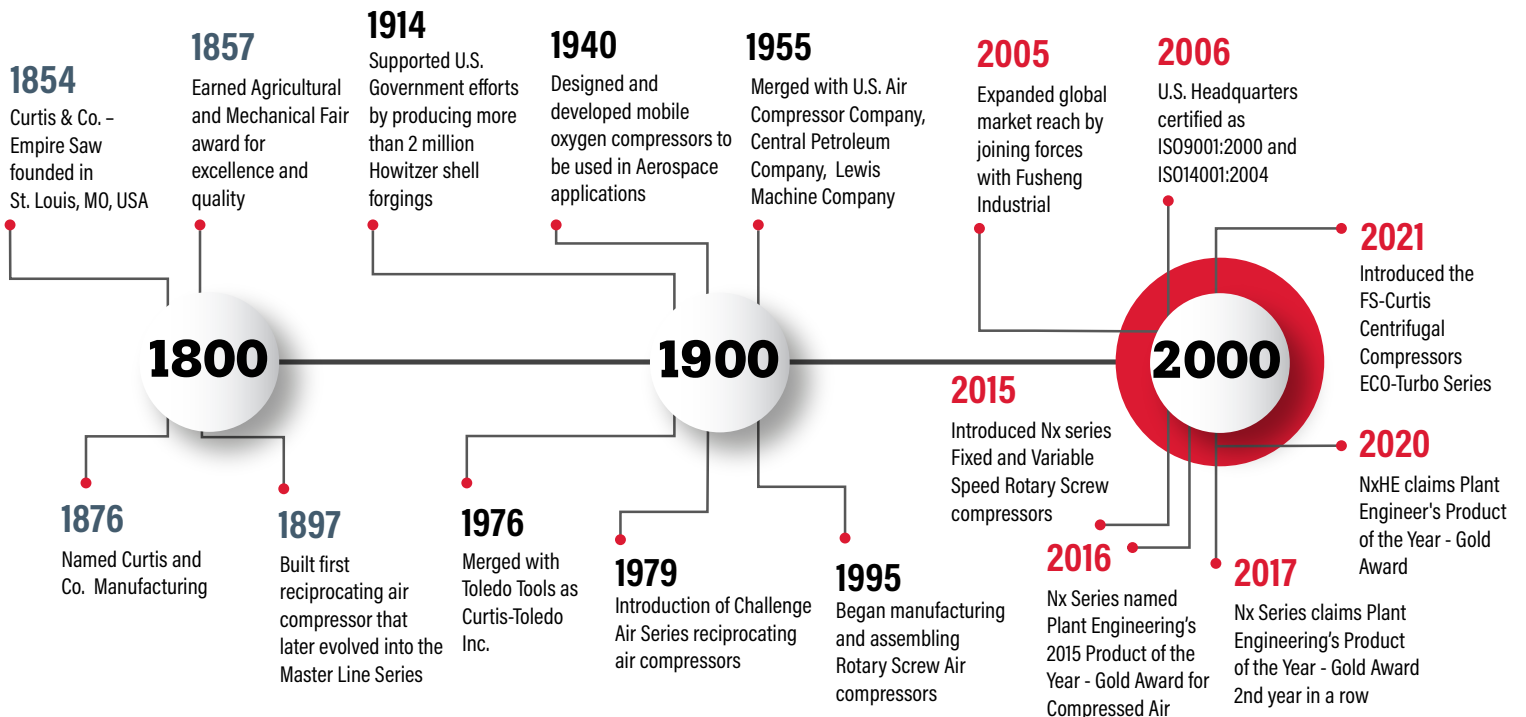
**SOME COMPANIES ARE FOUNDED ON HARD WORK.
OTHERS ARE FOUNDED ON IDEALS.**

**FS-CURTIS WAS
FOUNDED ON BOTH.**

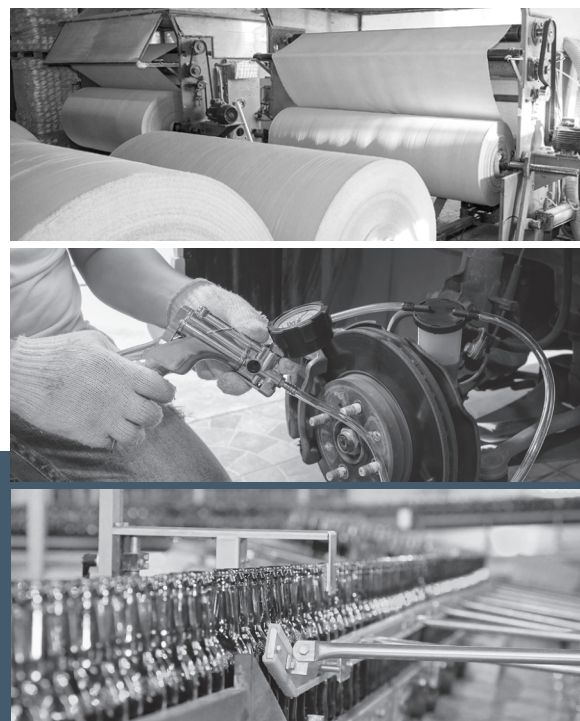
One-hundred and seventy years ago, the FS-Curtis way of doing business was established through two key commitments: a dedication to building quality products and a dedication to responsive customer service.

Over the decades, the company and its products have evolved through innovation and new technologies. But those commitments to quality and service remain unchanged. Today, just as in 1854, FS-Curtis customers can depend on our products for reliable, long-term service. Equally as important, they can depend on getting the same from our people.

A HISTORY OF EXCELLENCE



HIGH PERFORMANCE. LEGENDARY RELIABILITY.



HEAVY-DUTY PERFORMANCE

Masterline is the most robust, heavy-duty reciprocating air compressor lineup available. The perfect combination of quality components, efficient design, and pressure fed lubrication make the ML Series rugged, affordable and smart. Because every model is built in the USA to last a lifetime in demanding working conditions, the ML Series is an outstanding alternative to splash lubricated reciprocating and small rotary compressors.



FEATURES AT A GLANCE

Centro-Ring Pressure Lubrication

Patented FS-Curtis design.

- Proprietary technology is an FS-Curtis exclusive
- Supplies pressurized oil internally to all bearings and critical wear surfaces through the rifle-drilled crankshaft and connecting rods
- Helps ensure maximum uptime and increase service life

100% Cast-Iron Cylinders, Cylinder Heads, Connecting Rods, And Crankshaft

All cast-iron where it counts for longer life with less maintenance.

- Some pumps claim 100% cast-iron yet still have aluminum cylinders, cylinder heads, connecting rods and crankshafts — not FS-Curtis
- Ductile cast-iron crankshaft and connecting rods are stronger, more corrosion-resistant and less likely to break
- Slow-turning pump increases pump life
- Rugged parts and construction for industrial performance

Robust Quality Components

Built for Increased Longevity and Durability.

- Industry leading spring and disc valve assemblies for increased airflow and reliability
- Oversized tapered main roller bearings to ensure long life
- Premium finned intercooler maximizes heat dissipation
- Metal intake filter housing is superior to plastic
- Heavy-duty stamped-steel belt guard
- Suction valve head unloaders for continuous running air compressors

ML SERIES

THE CONFIGURATION YOU NEED

ML Series compressors aren't just durable. They're also versatile, with a wide range of available configurations. No matter what your application, there's a Masterline compressor just right for your needs. Be sure to speak with your FS-Curtis distributor to learn about the many Masterline options available to you.

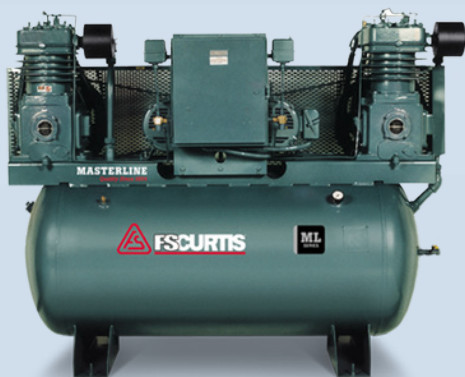
THE PERFECT ALTERNATIVE TO SMALL ROTARY AIR COMPRESSORS

Due to our patented Centro-Ring pressure lubrication and robustly-sized pumps and components, ML Series compressors can handle more rugged, hot, and dirty ambient conditions that would put a splash-lube recip or rotary screw air compressor at risk of failure and expensive repairs.

SIMPLEX

Properly sized simplex compressors are well suited for industrial applications with variable demand.

- Magnetic motor starter
- Manual tank drain
- Oil sight glass
- Horizontal or vertical tank configurations available
- Factory oil filled Heavy-duty stamped-steel belt guard
- Suction valve head unloaders for continuous running air compressors



DUPLEX

Duplex compressors are ideal for redundancy, alternating two pumps during constant demand periods, and providing "trim" capacity.

- Alternator control panel comes mounted with magnetic motor starters and thermal overload protection
- Compressors alternate during normal operation
- Both compressors run when system demands it
- Duplex design reduces electrical cost and eliminates downtime
- Factory oil filled

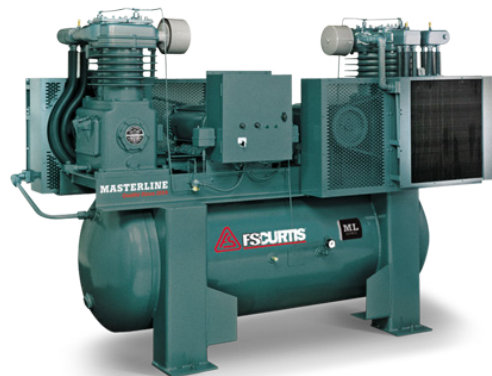
ULTRAPACK

The ultimate value, an FS-Curtis UltraPack gives you a Masterline Simplex or Duplex compressor fully packaged with the most common options and accessories. You'll save money and time by getting it all in one package, and you'll be assured of increasing air quality while reducing maintenance needs. Industry-leading five year UltraShield warranty available — talk to your FS-Curtis representative for more details.

- Air-cooled aftercooler
- Magnetic motor starter (Simplex)
- Alternator panel (Duplex)
- Dual control (10-30HP Simplex)
- Low oil level shutdown
- Automatic tank drain
- Tank isolator pads
- Factory oil filled



ULTRASHIELD
WARRANTY



ML SERIES

TECHNICAL DATA

STANDARD FEATURES	STANDARD (Simplex / Duplex)	ULTRAPACK (Simplex / Duplex)
Patented Centro-Ring pressure lubrication system	●	●
100% cast-iron—Cylinders, cylinder heads, connecting rods	●	●
Factory oil filled	●	●
Magnetic motor starter (Simplex)	●	●
Alternater control panel complete with magnetic starters (Duplex)	●	●
NEMA-designed electric motor	●	●
Automatic start/stop controls	●	●
ASME-approved air receiver	●	●
Manual condensate tank drain valve	●	●
Dial read-out pressure gauge	●	●
U.L. -approved pressure switch	●	●
ASME-approved safety valve	●	●
ASME-approved discharge valve	●	●
Metal intake filter/silencers	●	●
Dynamically balanced flywheel	●	●
OSHA-approved totally enclosed metal belt guard	●	●
Dual control (10-30HP Simplex)	○	U
Air-cooled aftercooler	○	U
Low oil level shutdown	○	U
Automatic tank drain	○	U
Tank isolator pads	○	U

THE CENTRO-RING PRESSURE LUBRICATION ADVANTAGE

When you need continuous duty, the ML Series delivers. Only FS-Curtis offers the unique Centro-Ring lubrication system that extends the life of the compressor. Centro-Ring lubrication is superior to splash-lubricated systems because it supplies pressurized oil internally to all bearings and critical wear surfaces through the rifle-drilled crankshaft and connecting rods, ensuring that all critical components are properly lubricated. That means an air compressor with Centro-Ring lubrication will last significantly longer than a similar splashlubricated compressor. It's just another reason why the FS-Curtis ML Series is the most trusted and dependable line available.

ULTRAPACK DELIVERS

There's no better compressor value than an FS-Curtis UltraPack. As you can see, you'll get every top-quality FS-Curtis feature. Plus, only UltraPack purchases come with a 5-year UltraShield warranty.



ULTRASHIELD
WARRANTY

ELECTRIC MODELS

MODEL	HP	PUMP	CFM (@175 psi)	CONFIGURATION	STANDARD PACKAGE			ULTRAPACK		
					TANK (gal.)	DIMENSIONS (LxWxH - in.)	WEIGHT (lbs.)	TANK (gal.)	DIMENSIONS (LxWxH - in.)	WEIGHT (lbs.)
ML5	5	D96	19.1 Simplex	Horizontal	80	67 x 26 x 51	600	80	67 x 29 x 52	650
				Vertical		36 x 30 x 77			39 x 32 x 78	
			38.2 Duplex	Horizontal	120	76 x 29 x 56	1025	120	83 x 31 x 57	1095
ML7.5	7.5	C79	28.7 Simplex	Horizontal	80	67 x 26 x 49	650	80	67 x 29 x 50	700
				Vertical		36 x 30 x 75			39 x 32 x 76	
			57.4 Duplex	Horizontal	200	76 x 29 x 54	1200	200	82 x 31 x 55	1300
ML10	10	D97	39.8 Simplex	Horizontal	120	74 x 33 x 59	1020	120	74 x 36 x 57	1050
			79.6 Duplex		200	88 x 32 x 64	1800	200	90 x 37 x 64	1950
ML15	15	C89	49.5 Simplex	Horizontal	120	74 x 33 x 59	1150	120	74 x 36 x 59	1250
ML15+	15		55.8 Simplex		120	74 x 33 x 59	1150	120	74 x 36 x 57	1250
			111.6 Duplex		200	88 x 36 x 64	2000	200	89 x 40 x 64	2150
ML20	20	C98	65.1 Simplex	Horizontal	120	73 x 33 x 58	1125	—	—	—
ML20+	20		79.3 Simplex		200	78 x 43 x 76	2050	—	—	—
			158.6 Duplex		240	95 x 46 x 73	3650	240	105 x 53 x 74	3800
ML25	25	82.4 Simplex	Horizontal	200	78 x 43 x 76	2150	—	—	—	
		164.8 Duplex		240	95 x 46 x 73	3750	240	105 x 53 x 74	3900	
ML30	30	102.2 Simplex	Horizontal	200	78 x 43 x 76	2350	—	—	—	
		204.4 Duplex		240	95 x 46 x 73	3850	240	105 x 53 x 74	4075	

CONTINUED COMMITMENT

A company history that dates 170 years is a company history that, to us, is just the beginning. FS-Curtis is committed to offering a world-class portfolio of products. Through the dependability of our people and our quality-focused manufacturing, FS-Curtis will continue to be the most trusted and dependable name in compressed air serving even more markets through our ever-growing global presence.



You can count on **FS-Curtis** to approach the next 170 years by staying true to the values and strengths that are appreciated by our customers today.

A WORLD OF DIFFERENCE

The FS-Curtis headquarters in St. Louis, Missouri, U.S.A. is the anchor of a larger global network. FS-Curtis builds quality products — and a quality reputation — at locations around the world.

In addition to our manufacturing and packaging locations, a large global network of sales agents and distributors ensures that sales and service support is available around the world, day in and day out.



ST. LOUIS, MO USA (HEADQUARTERS)

TAIPEI, TAIWAN (FUSHENG HQ) | SHANGHAI, CHINA (FUSHENG)
PITTSBURGH, PA USA (FS-ELLIOTT) | KONGEN, GERMANY (ALMIG)
PUNE, INDIA (FS-CURTIS) | HO CHI MINH CITY, VIETNAM (FUSHENG)

Distributed By:



CURTIS-TOLEDO, INC.

1905 KIENLEN AVENUE | ST. LOUIS, MO 63133

+1 314-383-1300 | WWW.FSCURTIS.COM | INFO@FSCURTIS.COM



CORPLITERATURE: FSL-MLFLBREV1
Improvements and research are continuous at FS-Curtis. Specifications may change without notice.

© 2023 CURTIS-TOLEDO, INC.