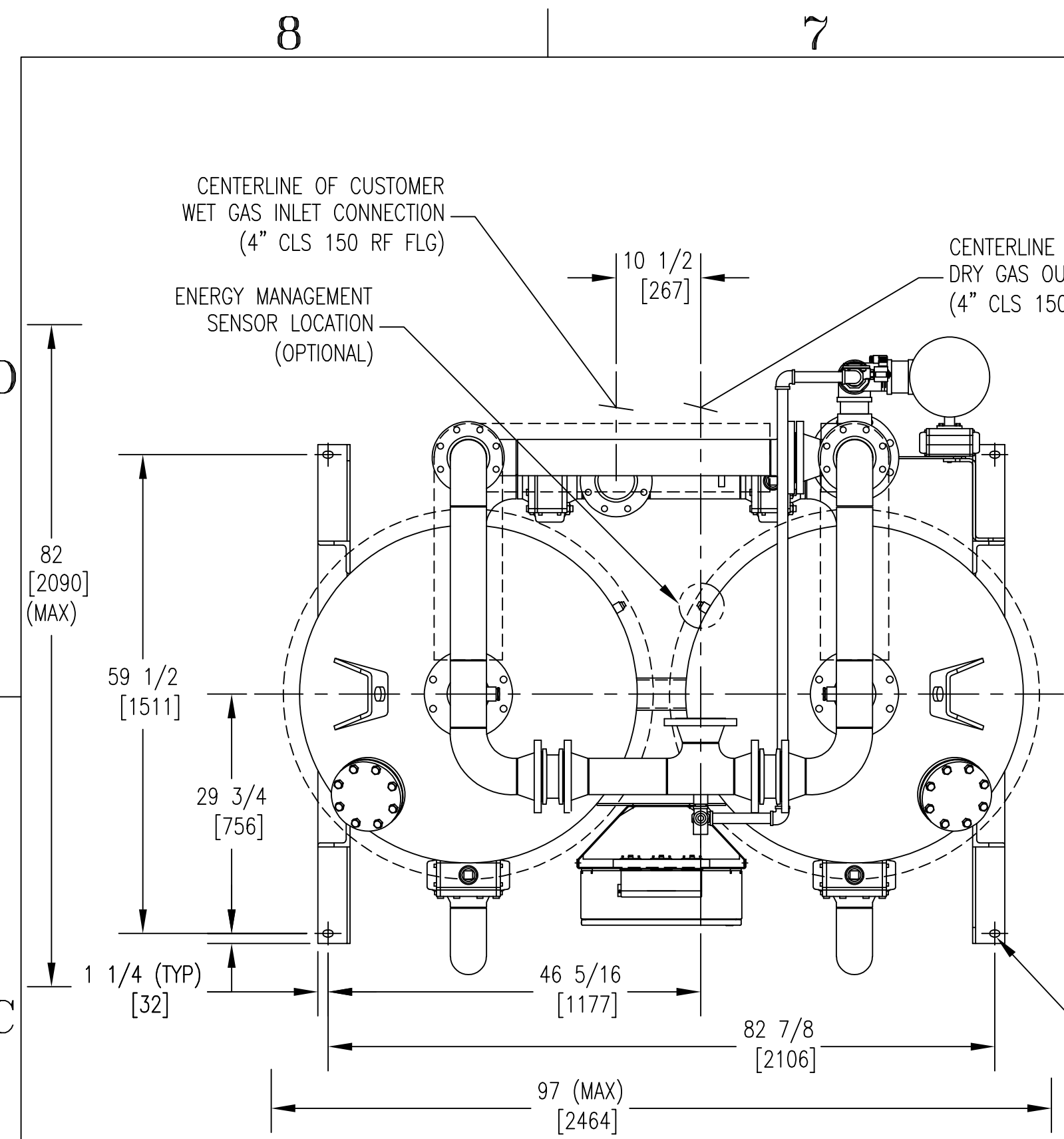
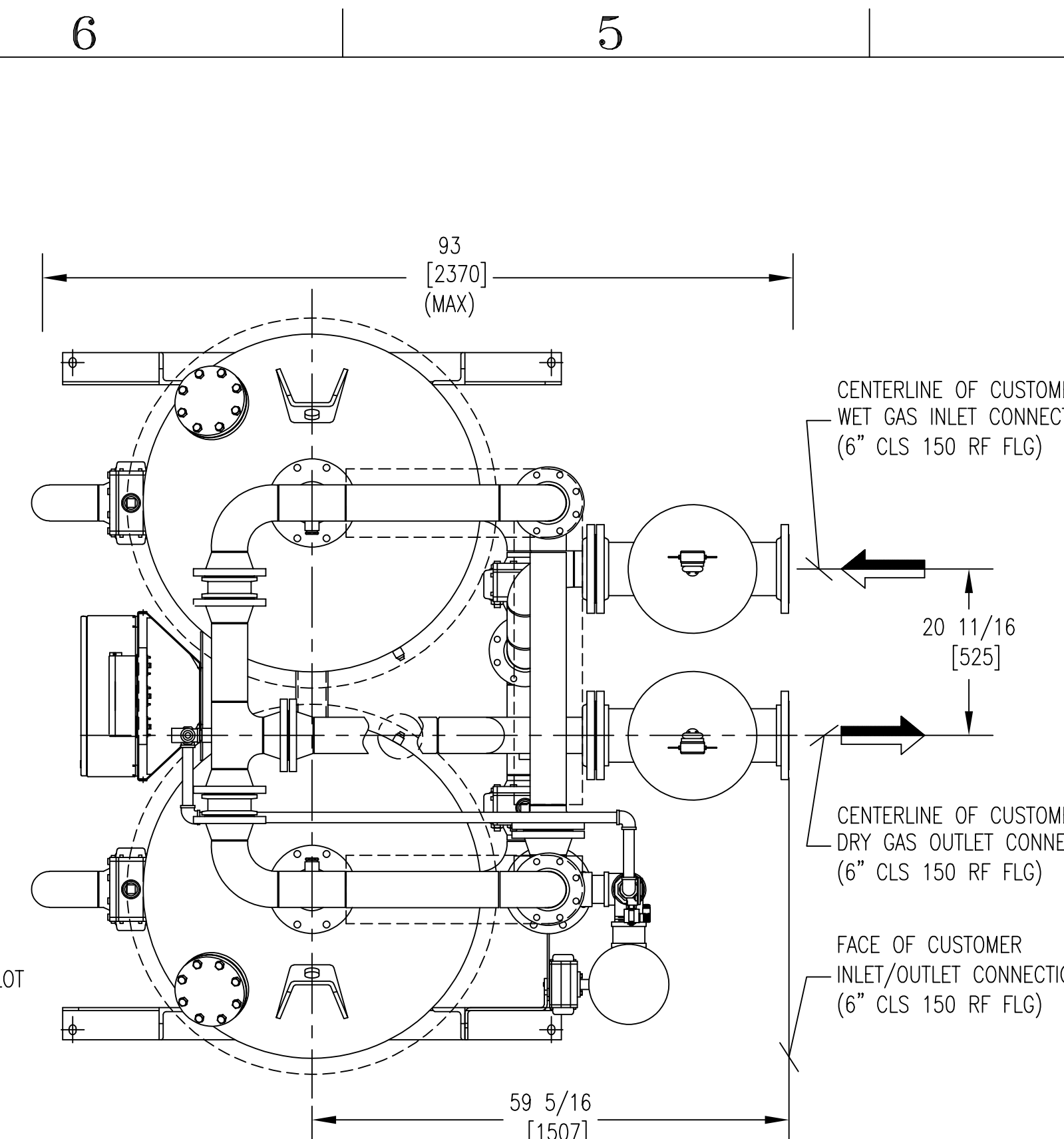


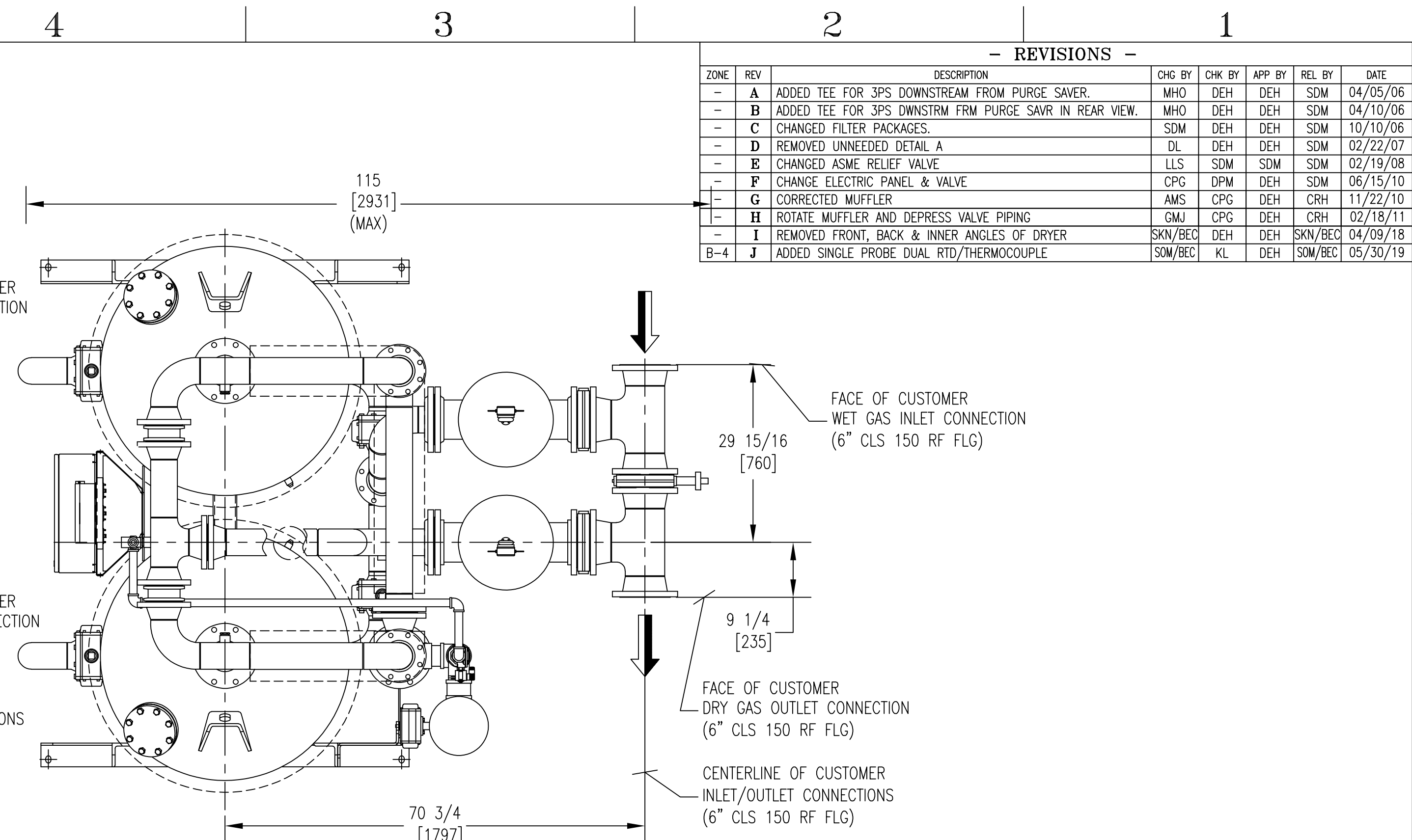
| - REVISIONS - | | | | | | | |
|---------------|-----|---|---------|--------|--------|---------|----------|
| ZONE | REV | DESCRIPTION | CHG BY | CHK BY | APP BY | REL BY | DATE |
| - | A | ADDED TEE FOR 3PS DOWNSTREAM FROM PURGE SAVER. | MHO | DEH | DEH | SDM | 04/05/06 |
| - | B | ADDED TEE FOR 3PS DOWNSTRM FRM PURGE SAVR IN REAR VIEW. | MHO | DEH | DEH | SDM | 04/10/06 |
| - | C | CHANGED FILTER PACKAGES. | SDM | DEH | DEH | SDM | 10/10/06 |
| - | D | REMOVED UNNEEDED DETAIL A | DL | DEH | DEH | SDM | 02/22/07 |
| - | E | CHANGED ASME RELIEF VALVE | LLS | SDM | SDM | SDM | 02/19/08 |
| - | F | CHANGE ELECTRIC PANEL & VALVE | CPG | DPM | DEH | SDM | 08/15/10 |
| - | G | CORRECTED MUFFLER | AMS | CPG | DEH | CRH | 11/22/10 |
| - | H | ROTATE MUFFLER AND DEPRESS VALVE PIPING | GMJ | CPG | DEH | CRH | 02/18/11 |
| - | I | REMOVED FRONT, BACK & INNER ANGLES OF DRYER | SKN/BEK | DEH | DEH | SKN/BEK | 04/09/18 |
| B-4 | J | ADDED SINGLE PROBE DUAL RTD/THERMOCOUPLE | SOM/BEK | KL | DEH | SOM/BEK | 05/30/19 |



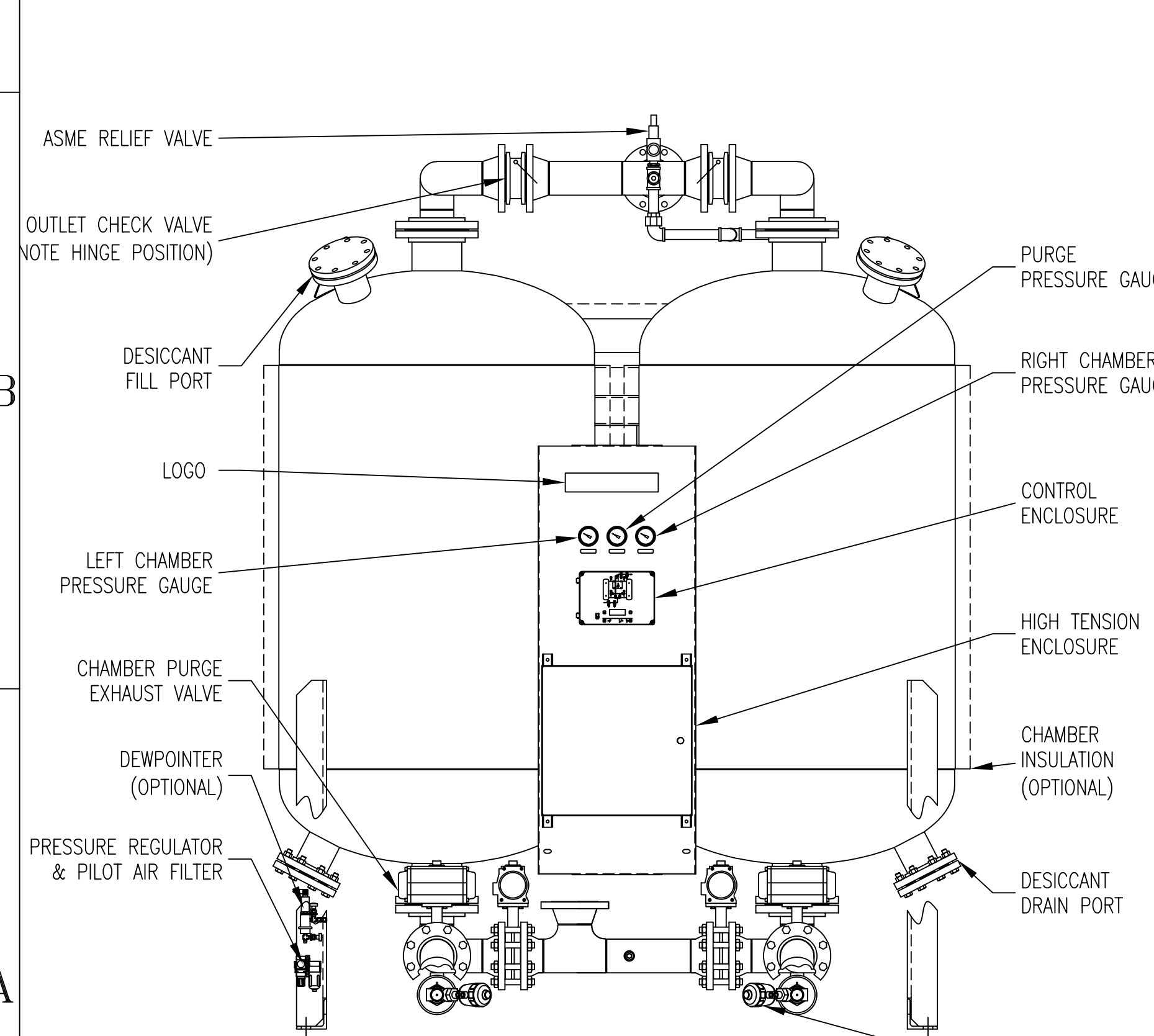
TOP VIEW



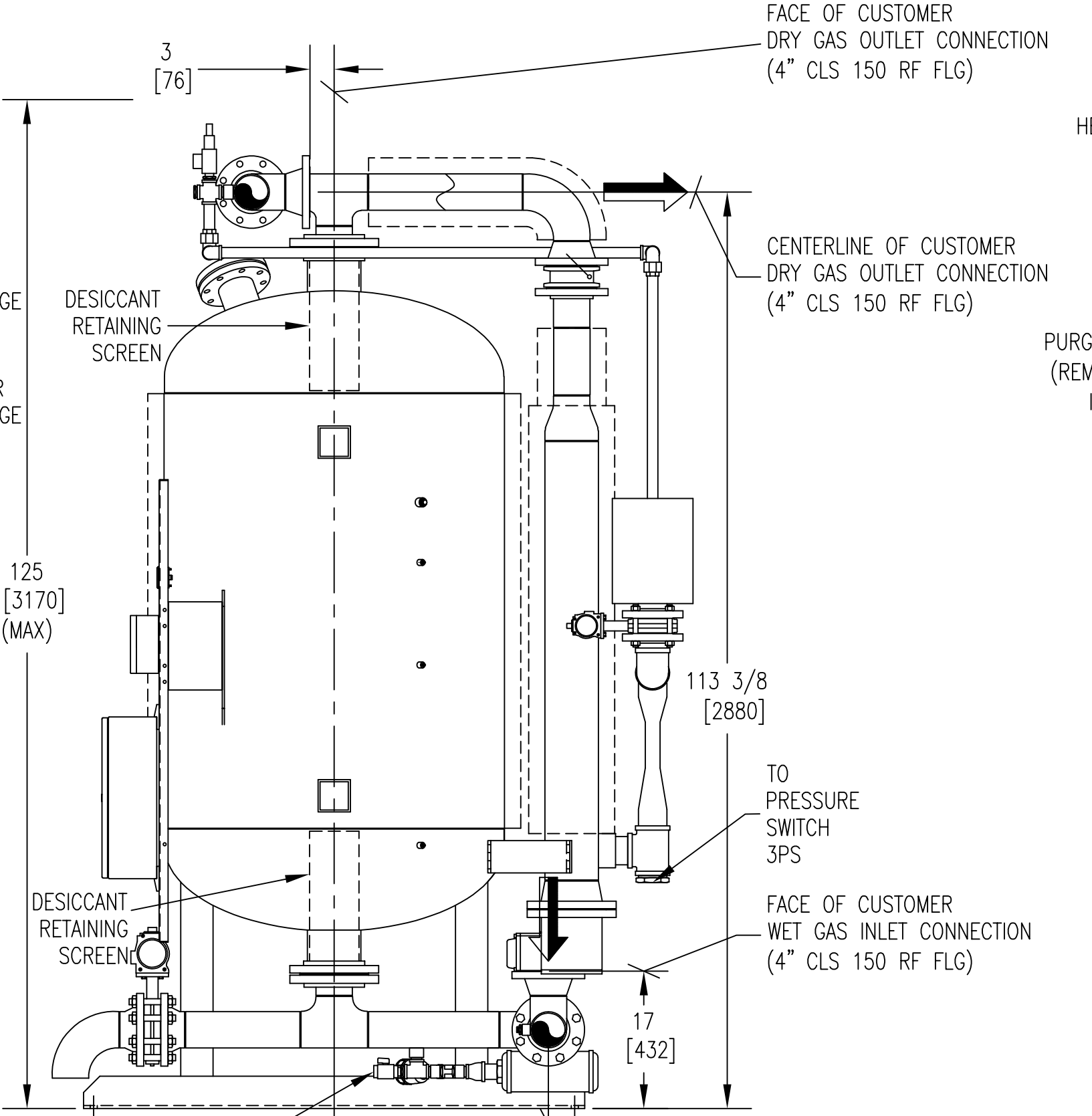
TOP VIEW
(F02 PKG OPTIONAL)



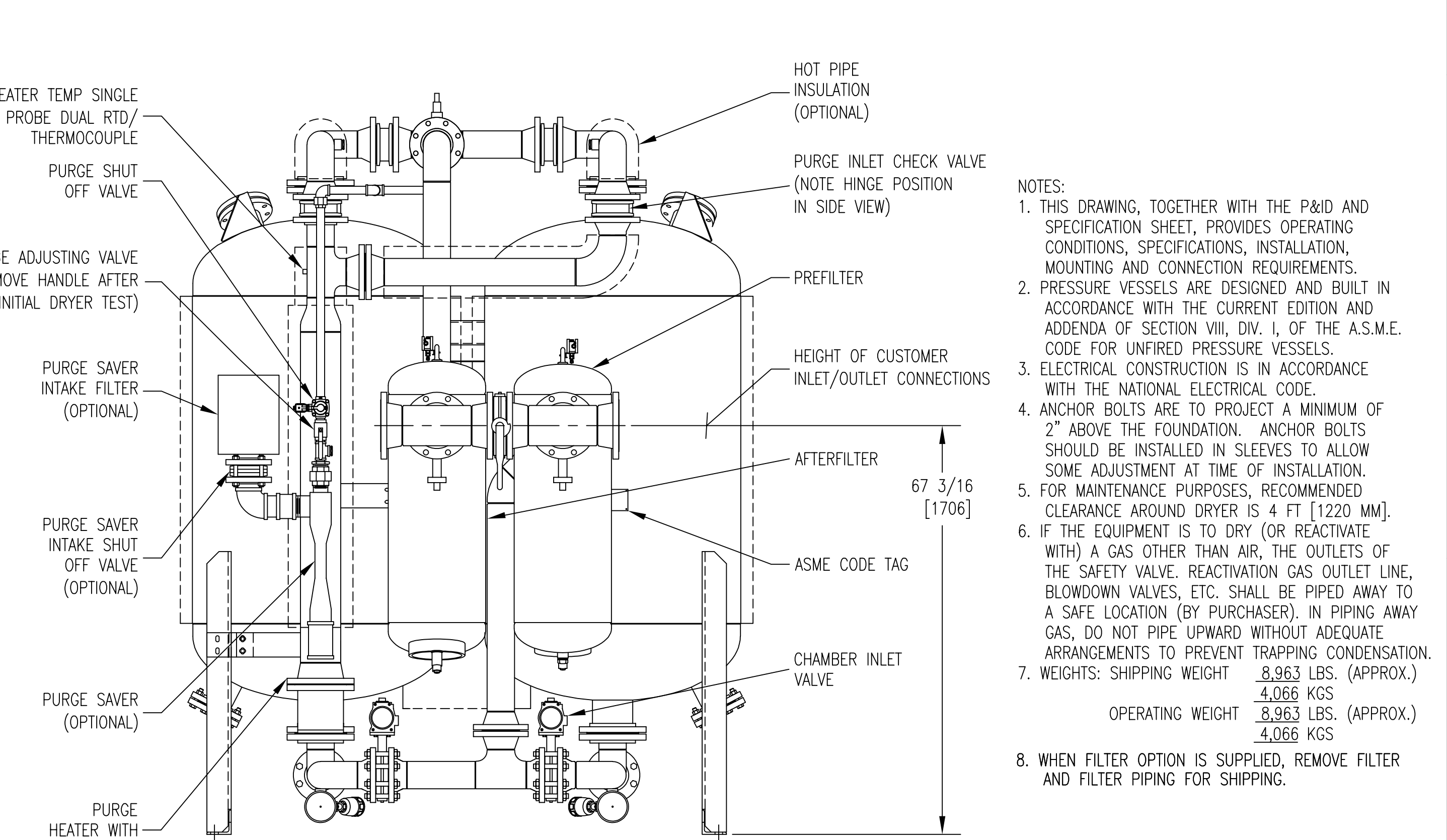
REAR VIEW
(F02 PKG OPTIONAL)



FRONT VIEW



SIDE VIEW
(RIGHT CHAMBER REMOVED FOR CLARITY)



REAR VIEW
(F01/F02 PKG OPTIONAL)

- NOTES:
- THIS DRAWING, TOGETHER WITH THE P&ID AND SPECIFICATION SHEET, PROVIDES OPERATING CONDITIONS, SPECIFICATIONS, INSTALLATION, MOUNTING AND CONNECTION REQUIREMENTS.
 - PRESSURE VESSELS ARE DESIGNED AND BUILT IN ACCORDANCE WITH THE CURRENT EDITION AND ADDENDA OF SECTION VIII, DIV. I, OF THE A.S.M.E. CODE FOR UNFIRED PRESSURE VESSELS.
 - ELECTRICAL CONSTRUCTION IS IN ACCORDANCE WITH THE NATIONAL ELECTRICAL CODE.
 - ANCHOR BOLTS ARE TO PROJECT A MINIMUM OF 2" ABOVE THE FOUNDATION. ANCHOR BOLTS SHOULD BE INSTALLED IN SLEEVES TO ALLOW SOME ADJUSTMENT AT TIME OF INSTALLATION.
 - FOR MAINTENANCE PURPOSES, RECOMMENDED CLEARANCE AROUND DRYER IS 4 FT [1220 MM].
 - IF THE EQUIPMENT IS TO DRY (OR REACTIVATE WITH) A GAS OTHER THAN AIR, THE OUTLETS OF THE SAFETY VALVES, ETC. SHALL BE PIPED AWAY TO A SAFE LOCATION (BY PURCHASER). IN PIPING AWAY GAS, DO NOT PIPE UPWARD WITHOUT ADEQUATE ARRANGEMENTS TO PREVENT TRAPPING CONDENSATION.
 - WEIGHTS: SHIPPING WEIGHT 8,963 LBS. (APPROX.)
OPERATING WEIGHT 4,066 KGS (APPROX.)
OPERATING WEIGHT 8,963 LBS. (APPROX.)
OPERATING WEIGHT 4,066 KGS
 - WHEN FILTER OPTION IS SUPPLIED, REMOVE FILTER AND FILTER PIPING FOR SHIPPING.

| | | | | |
|------------------------------|--|----------------|--------------|---|
| UNLESS OTHERWISE SPECIFIED: | | NAME | DATE | UNAUTHORIZED USE, MANUFACTURE, OR REPRODUCTION IN WHOLE OR IN PART IS PROHIBITED. DRAWING DESIGN AND OTHER DISCLOSURES ARE PROPERTY OF Deltech |
| DIMENSIONS ARE IN: INCHES/MM | | DWN BY | SDM 01/04/05 | |
| SURFACE FINISH: N/A ✓ | | ENG BY | DEH 01/04/05 | GENERAL ARRANGEMENT RP 3200 |
| TOL. MM INCHES | | CHK BY | SDM 01/04/05 | |
| .X - - - | | APP BY | DEH 01/04/05 | |
| .XX - - - | | REL BY | SDM 01/04/05 | |
| .XXX - - - | | MAT NO. | ---- | SIZE DWG. NO. |
| FRACT: ±1/2 ANG: ±2° | | D 0027008-3200 | | REV. SHEET |
| SCALE: 1/16 WT: N/A | | J 1/1 | | |