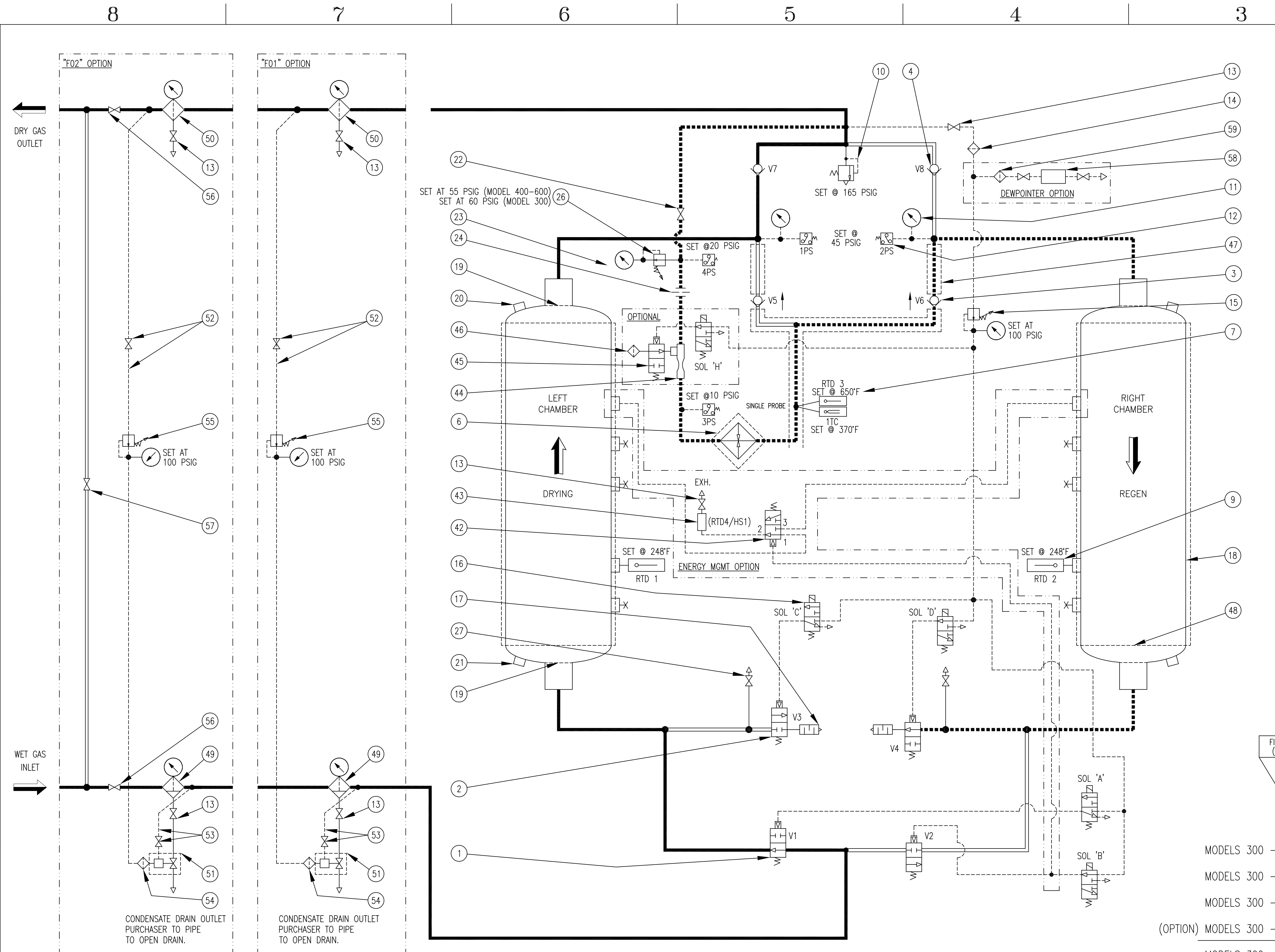


- REVISIONS -

ZONE	REV	DESCRIPTION	CHG BY	CHK BY	APP BY	REL BY	DATE
-	A	ADDED DETAIL 'A'.	SDM	DEH	DEH	SDM	07/13/04
-	B	ADDED DETAIL 'B'.	SDM	DEH	DEH	SDM	08/17/04
-	C	REMOVED DETAILS 'A' & 'B'; DWG WAS FOR 300-3200 SCFM.	SDM	DEH	DEH	SDM	09/03/04
-	D	TTC SETPOINT WAS 400°F.	SDM	DEH	DEH	SDM	10/18/04
-	E	ADDED ITEM 59.	SDM	DEH	DEH	SDM	09/08/05
-	F	MOVED 3PS DOWNSTREAM FROM PURGE SAVER	MHO	SDM	SDM	SDM	11/9/05
-	G	SET PRESSURE OF ITEM 26 WAS 65 PSIG	GAR	DEH	DEH	SDM	06/5/07
-	H	ADDED HEATER COOL DOWN SEQUENCE	GMJ	DPM	DPM	CRH	01/26/11
-	I	ADDED 4PS AND CORRECTED SET PRESSURE OF 3PS	JLS	CRH	CRH	JLS	09/18/14
-	J	ADDED HEATER DUAL RTD/TC	YDA/BEC	MHO	MHO	YDA/BEC	05/28/19

**LEGEND**

- |  |  |
|--|--|
| 1. INLET VALVE (V1 LEFT, V2 RIGHT)               | 42. ENERGY MANAGEMENT PILOT OPERATED VALVE |
| 2. PURGE EXHAUST VALVE (V3 LEFT, V4 RIGHT)       | 43. ENERGY MANAGEMENT SENSOR (RTD4/HS1)    |
| 3. PURGE CHECK VALVE (V5 LEFT, V6 RIGHT)         | 44. PURGE SAVER                            |
| 4. OUTLET CHECK VALVE (V7 LEFT, V8 RIGHT)        | 45. PURGE SAVER INTAKE SHUT-OFF VALVE      |
| 5. PURGE HEATER WITH INSULATION                  | 46. PURGE SAVER INTAKE FILTER/SILENCER     |
| 6. HEATER TEMPERATURE SINGLE PROBE-              |  |
| 7. DUAL THERMOCOUPLE/OVERTEMPERATURE RTD         |  |
| 8. CHAMBER RTD (LEFT & RIGHT)                    |  |
| 9. RELIEF VALVE                                  |  |
| 10. CHAMBER PRESSURE GAUGES (LEFT & RIGHT)       |  |
| 11. CHAMBER PRESSURE SWITCH (LEFT & RIGHT)       |  |
| 12. SERVICE VALVE                                |  |
| 13. PILOT AIR FILTER                             |  |
| 14. PRESSURE REGULATOR & GAUGE                   |  |
| 15. SOLENOID VALVE                               |  |
| 16. MUFFLER                                      |  |
| 17. DESICCANT CHAMBER                            |  |
| 18. DESICCANT RETAINING SCREEN (TOP & BOTTOM)    |  |
| 19. DESICCANT FILL PORT                          |  |
| 20. DESICCANT DRAIN PORT                         |  |
| 21. PURGE ADJUSTING VALVE                        |  |
| 22. PURGE PRESSURE GAUGE                         |  |
| 23. PURGE FLOW ORIFICE                           |  |
| 24. PURGE HEATER (NOT PROVIDED WITH PURGE SAVER) |  |
| 25. PRESSURE REGULATOR                           |  |
| 26. CHAMBER BLOW-DOWN VALVE                      |  |
| 27. THRU 41. (NOT USED)                          |  |
- 
- |  |  |
|--|--|
| <b>"F01" OPTION</b>                                    | 47. HOT PIPE INSULATION                          |
| 48. CHAMBER INSULATION                                 |  |
| <b>"F02" OPTION</b>                                    | 49. PREFILTER (WITH INTEGRAL DIFF. PRESS. GAUGE) |
| 50. AFTERFILTER (WITH INTEGRAL DIFF. PRESS. GAUGE)     |  |
| 51. DRAIN VALVE  |  |
| 52. PILOT AIR LINE AND SERVICE VALVE (IF REQUIRED)     |  |
| 53. BALANCE LINE AND SERVICE VALVE (IF REQUIRED)       |  |
| 54. PILOT LINE INLET FILTER (IF REQUIRED)              |  |
| 55. PILOT AIR PRESSURE REGULATOR & GAUGE (IF REQUIRED) |  |
| <b>"F02" OPTION</b>                                    | 56. SYSTEM BLOCK VALVE                           |
| 57. SYSTEM BYPASS VALVE                                |  |
| <b>DEWPOINT OPTION</b>                                 | 58. DEWPOINT ANALYZER                            |
| 59. DEWPOINT ANALYZER FILTER                           |  |



FIXED CYCLE TIMING (TIME IN MINUTES)	LEFT CHAMBER DRYING (RIGHT CHAMBER REGEN)					RIGHT CHAMBER DRYING (LEFT CHAMBER REGEN)				
	2	176	4	55	3	2	176	4	55	3
ELECTRICAL COMPONENT										
ENERGIZED										
PROCESS COMPONENT										
PROCESS STATES										
DEPRESSURIZATION										
HEATING										
HEATER COOL DOWN										
SLEEP										
REPRESSURIZATION										
HOLD										
MODELS 300 - 600										
SOLENOID VALVE 'A' 3 WAY	YES		V1	CLOSED						
	NO			OPEN						
MODELS 300 - 600										
SOLENOID VALVE 'B' 3 WAY	YES		V2	CLOSED						
	NO			OPEN						
MODELS 300 - 600										
HEATER	YES			ON						
	NO			OFF						
(OPTION) MODELS 300 - 600										
SOLENOID VALVE 'H' 3 WAY	YES			OPEN						
	NO			CLOSED						
MODELS 300 - 600										
SOLENOID VALVE 'C' 3 WAY	YES		V3	OPEN						
	NO			CLOSED						
MODELS 300 - 600										
SOLENOID VALVE 'D' 3 WAY	YES		V4	OPEN						
	NO			CLOSED						

MODEL	PURGE SET PRESSURE (PSIG)		MODEL	ORIFICE DIA. (IN)
	NO PURGE SAVER	WITH PURGE SAVER		
300	34	58	300	7/32
400	34	37	400	1/4
500	34	47	500	9/32
600	34	38	600	5/16

- NOTES**
- SYMBOLS ARE PER ANSI Y32.10 "GRAPHIC SYMBOLS FOR FLUID POWER DIAGRAMS."
  - AS SHOWN FLOW DIRECTION IS:
    - SOLID LINE: LEFT CHAMBER DRYING
    - DASHED LINE: RIGHT CHAMBER REGEN
    - DOTTED LINE: PILOT GAS LINE
  - SOLENOID VALVES 'B', 'D', 'G', & 'H' ARE SHOWN ENERGIZED. SOLENOID VALVES 'A', 'C', 'E', & 'F' ARE SHOWN DE-ENERGIZED.
  - [ ] INDICATES OPTION

UNLESS OTHERWISE SPECIFIED:

DIMENSIONS ARE IN:	N/A	NAME	DATE
SURFACE FINISH:	N/A	DWN BY	GMJ 05/03/04
TOL.	MM	ENG BY	DEH 05/03/04
X.	-	CHK BY	JET 05/03/04
.XX	-	APP BY	DEH 05/03/04
.XXX	-	REL BY	SDM 05/03/04
FRACT:	N/A	ANG:	N/A
SCALE:	NONE	WT:	N/A

MAT NO. ---

SIZE: D

UNAUTHORIZED USE, MANUFACTURE, OR REPRODUCTION IN WHOLE OR IN PART IS PROHIBITED. DRAWING DESIGN AND OTHER DISCLOSURES ARE PROPERTY OF:

**Deltech**  
AN SPX BRAND  
\* DO NOT SCALE. USE DIMENSIONS ONLY \*

**P & ID**  
RP MODELS 300-600 SCFM

0027008-D1

REV. SHEET 1/1